

Northern Line Extension

Battersea Site

Community Liaison Group

14.03.16

Delivering the Northern line extension with

Summary Update Jan – Mar 2016

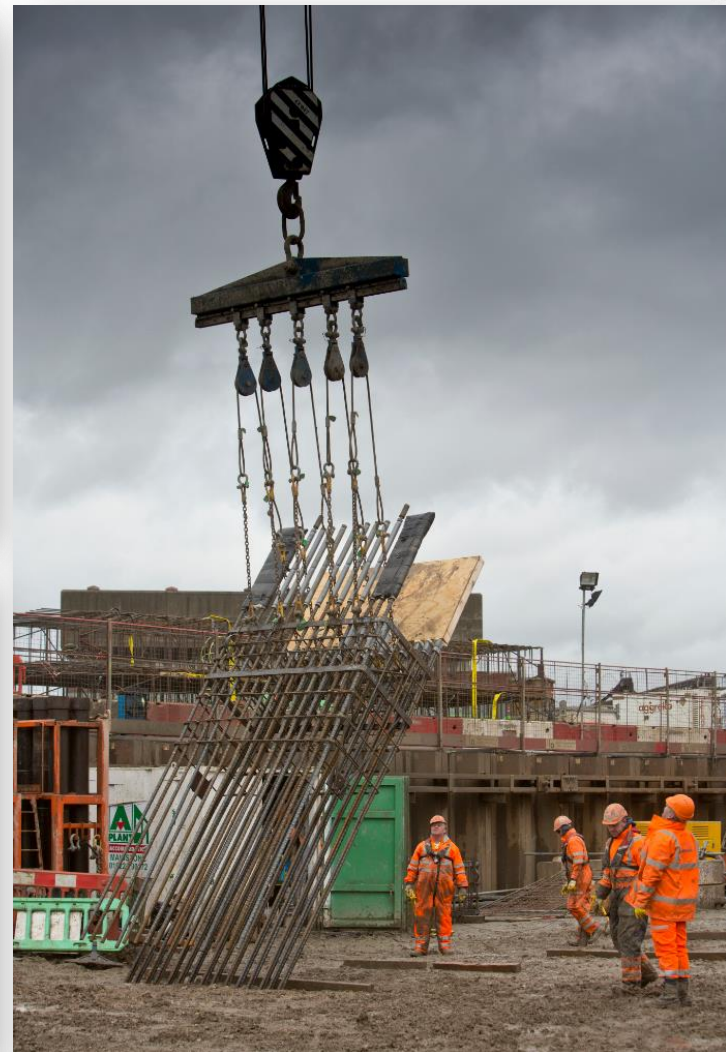
- Concrete Diaphragm wall
- Bentonite Plant / Heavy plant on site
- New entrance completed. Signalised junction
- Trial for the use of night use of the Barge
- Handed over south east corner site to BPSDC
- Barge operations ongoing



Battersea Update Jan – Mar 2016



FERROVIAL AGROMAN
AING O'ROURKE JV



Monitoring Jan – Mar 2016

Environmental Monitoring

Noise : 3 unattended continuous noise monitors

Dust : 2 unattended continuous dust monitors

6 dust slide locations

Monitoring Results Summary

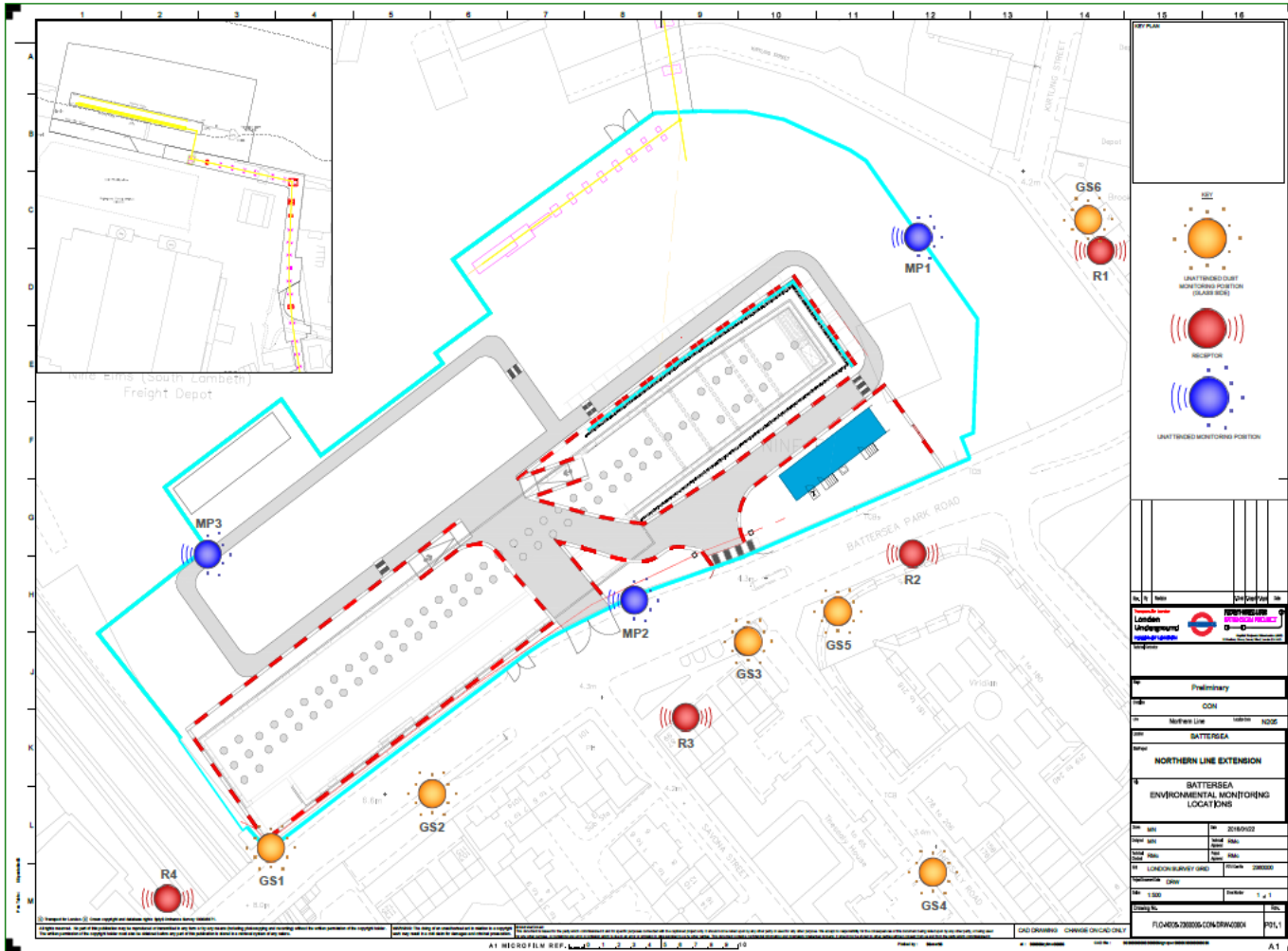
- 0 noise exceedances
- 1 dust slides exceedance – GS1 likely to be due to road traffic



Monitoring Locations Battersea



FERROVIAL AGROMAN
LAING O'ROURKE JV



Summary Update Mar – June 2016



FERROVIAL AGROMAN
LAING O'ROURKE JV

- D Walling completes on crossover box and starts on station box
- Excavation on crossover box
- Breakouts of D Walls heads
- Ongoing utilities in the area
- Thames Water utility works Kirtling St
- Barge operations continue



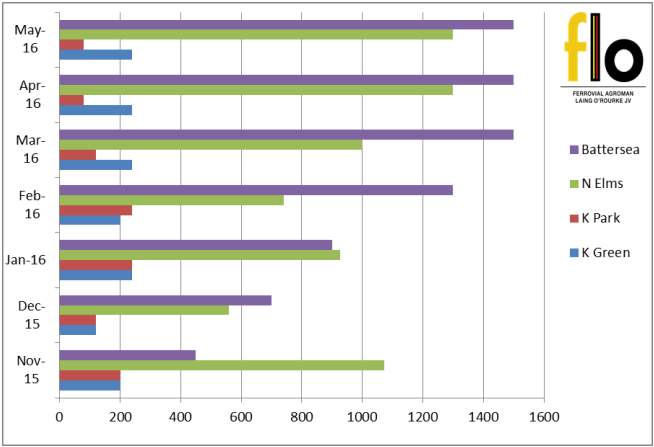
Traffic Management / Logistics



FERROVIAL AGROMAN
LAING O'ROURKE JV



	K Green	K Park	N Elms	Battersea
Nov-15	200	200	1073	450
Dec-15	120	120	558	700
Jan-16	240	240	926	900
Feb-16	200	240	740	1300
Mar-16	240	120	1000	1500
Apr-16	240	80	1300	1500
May-16	240	80	1300	1500
Jun-16	240	80	1300	1500



Conveyor and Barge movement



FERROVIAL AGROMAN
LAING O'ROURKE JV



- Night Trial Undertaken W/C 8th March (One barge per tide)
- Loading between 0800-1800
- In 2016 so far we have moved 40,000T by barge – the equivalent of 2000 Tipper Lorries
- 900T/ Week from Nine Elms to load on conveyor at Battersea
- Target 160,000T in 2016 by barge



Battersea Power Station design

There has been further design work since the NLE Transport and Works Act Order (TWAO) was awarded in November 2014. These enhancements include separating the station entrance to provide a western and an eastern entrance at ground level.

A small section of the eastern entrance at Battersea Power Station falls outside the area consented for development by the NLE TWAO.

We have submitted an outline planning application to LB Wandsworth and this has now been approved by Wandsworth.

Public exhibitions were held at our Battersea worksite:

- Saturday 6 February 2016 10.00-14.00
- Tuesday 9 February 2016 16.00-19.00

84 people attended / positive feedback



November 2015-Artist's impression of the Battersea Power Station eastern station entrance.

Your Feedback

You Suggested	We Did
Opportunities for local organisations	NLE hosted an event on 25 Feb for a group of unemployed young people. "Talent Match" career opportunities
More information to residents	Weekly email bulleting is now delivered every Friday
Light Pollution	NLE redirected the lights on the hoardings and site lighting is under review.
Integrated meetings with major developments in the area	NLE and Tideway are joining their CLG meetings. BPSDC on same date every 6 months
Keep Roads Clean	Road sweepers are working permanently Battersea Park Road Wheel washer being organised
Engagement with Local Schools	Visit to Griffin Primary School last 21 Feb. Follow up visits to be arranged
it was suggested that some advanced warning signs would be of great help in forewarning road users of the new signals at our site entrance	Temporary signs have been installed and we have requested additional safety measures be installed. Keep Clear road markings to road surface in the westbound carriageways/ "No U turn" signs in between the new traffic light posts/ Temporary vehicle marshal positive intervention for pedestrians, until mitigation is completed.



Engagement Opportunities

- Community Liaison Groups
- One to one meetings
- Drop in sessions
- School and Youth

Engagement

- LEAP group meetings
- Cycling safety Events



Ways to contact us

- It is important that calls are logged through the NLE 24/7 helpdesk on 0343 222 2424 Option 1
- Email nle@tfl.gov.uk
- Regular Drop In sessions
- Please visit:

<https://tfl.gov.uk/northern-line-extension>



Tideway

Community Liaison Working Group

Kirtling Street site

14 March 2016

Site preparation

- Boat movements at Nine Elms Pier are now complete
- Pontoons in the river have now been removed
- This work is vital to allow support Tideway's commitment to the river and to delivering/removing materials by barge.
- This will remove thousands of HGVs from the roads of Battersea and Wandsworth

Site preparation



Site handover

Sites now handed over to Tideway

- 80 Kirtling Street (Former V&A depot)
- Brooks Court offices
- CEMEX North Site



Demolition at CEMEX North

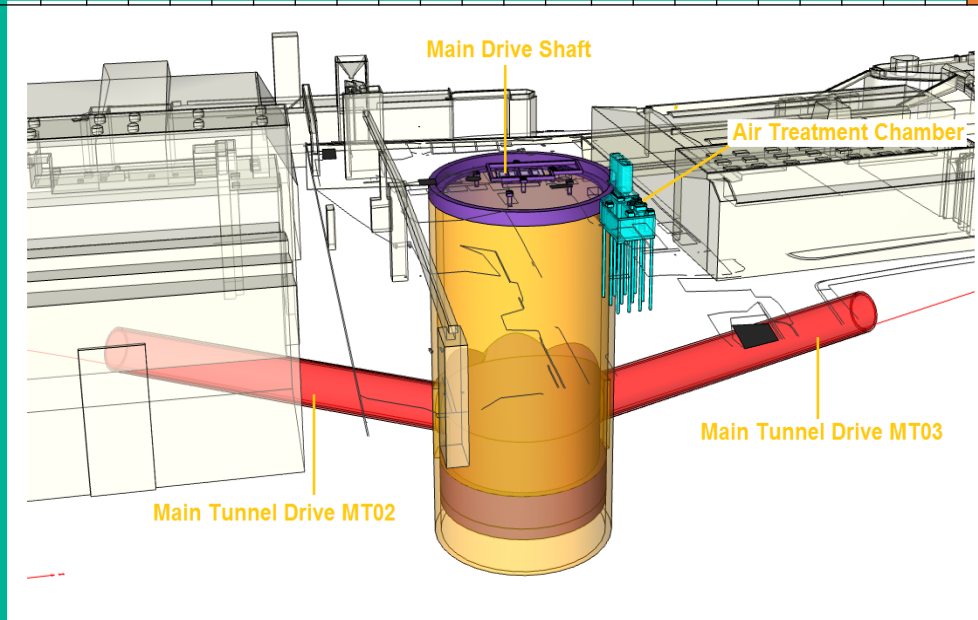
Site works

- Demolition of CEMEX North and 88 Kirtling Street are ongoing.
- Sonic boreholing to investigate land make-up and archaeological survey on site



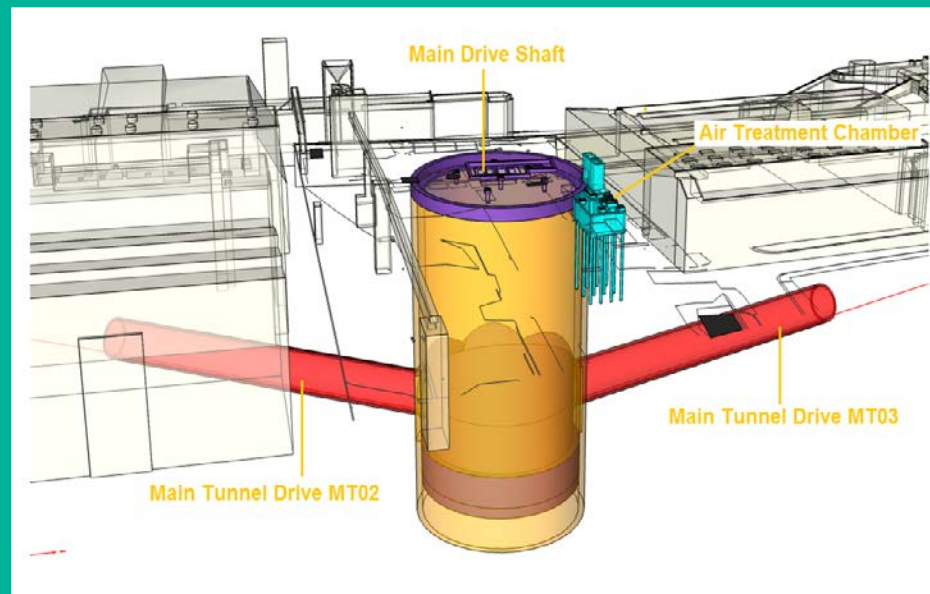
Kirtling St to Carnwath Rd - Tunnelling Programme

Activity	2017												2018												2019											
	Jan	Feb	Mar	Apr	May	Jun	Jul	Aug	Sep	Oct	Nov	Dec	Jan	Feb	Mar	Apr	May	Jun	Jul	Aug	Sep	Oct	Nov	Dec	Jan	Feb	Mar	Apr	May	Jun	Jul	Aug	Sep	Oct	Nov	
TBM Assembly	█	█	█																																	
TBM Launch - Setup pit Bottom							█	█																												
TBM Launch - Backup gantries & conveyor connections										█	█	█	█																							
Tunnel Drive - Kirtling St to Carnwath Rd													█	█	█	█	█	█	█	█	█	█	█	█												
Remove TBM & Backup																									█	█										
Installation of secondary lining																									█	█	█	█	█	█	█	█	█	█	█	█



Kirtling St to Chambers Wharf - Tunnelling Programme

Activity	2017												2018												2019												2020											
	Mar	Apr	May	Jun	Jul	Aug	Sep	Oct	Nov	Dec	Jan	Feb	Mar	Apr	May	Jun	Jul	Aug	Sep	Oct	Nov	Dec	Jan	Feb	Mar	Apr	May	Jun	Jul	Aug	Sep	Oct	Nov	Dec	Jan	Feb	Mar	Apr	May	Jun	Jul	Aug	Sep	Oct				
TBM Assembly	■	■																																														
TBM Launch - Modify cradle & lower TBM						■																																										
Tunnel Drive - Kirtling St to Blackfriars							■	■	■	■	■	■	■	■	■	■	■	■	■	■	■	■																										
Tunnel Drive - Blackfriars to Chambers Wharf																			■	■	■	■	■	■	■																							
Remove TBM backup from Blackfriars																								■	■																							
Installation of secondary lining Blackfriars to Kirtling Street																												■	■	■	■	■	■	■	■	■	■											
TBM Removal - Chambers Wharf																																																
Installation of secondary lining Blackfriars to Chambers Wharf																																																



Thames Water Preliminary Works

Preparing the site for works

- Handovers
- Nine Elms Pier
- Investigatory and utility works

Any questions?

Contact details:

- **General information helpline: 08000 30 80 80**
- **If you have a specific question call Mike Appleton: 0208 592 5533 or email michael.appleton@tideway.london**