



FERROVIAL AGROMAN
LAING O'ROURKE JV

Northern Line Extension

Battersea

Community Liaison Group

16 July 2019

Delivering the Northern line extension with

ferrovial
agroman



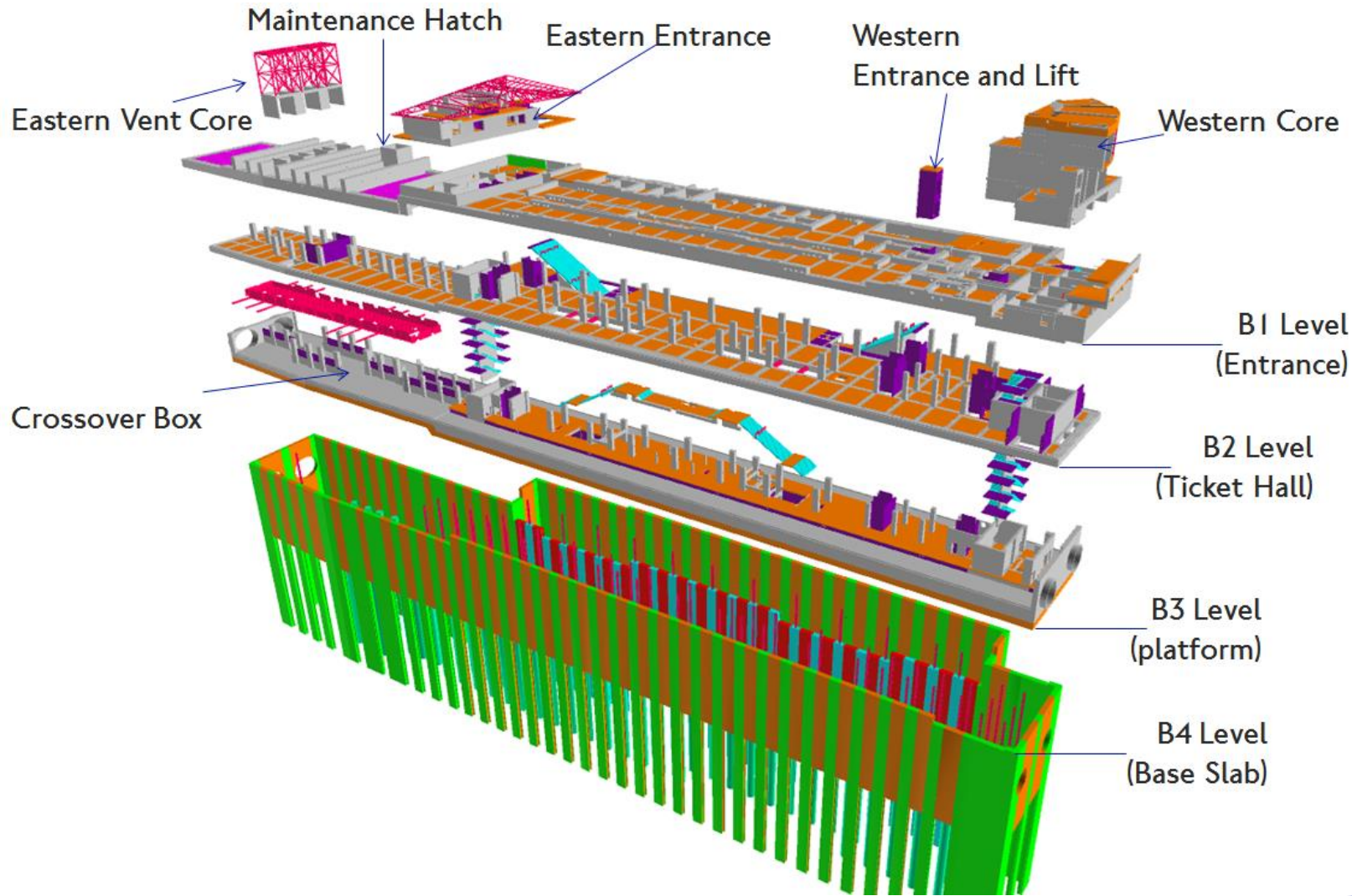
MAYOR OF LONDON



TRANSPORT
FOR LONDON



Battersea Power Station Update



Battersea Power Station: Progress Update

May 2019 – July 2019



FERROVIAL AGROMAN
LAING O'ROURKE JV



Cable Management/Ductwork/Pipework

- Continuing throughout all levels of the station

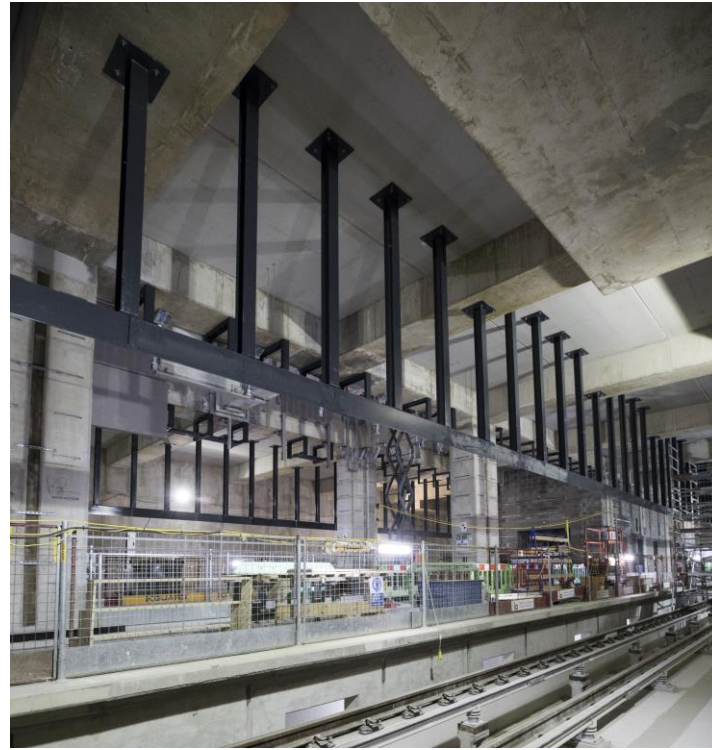
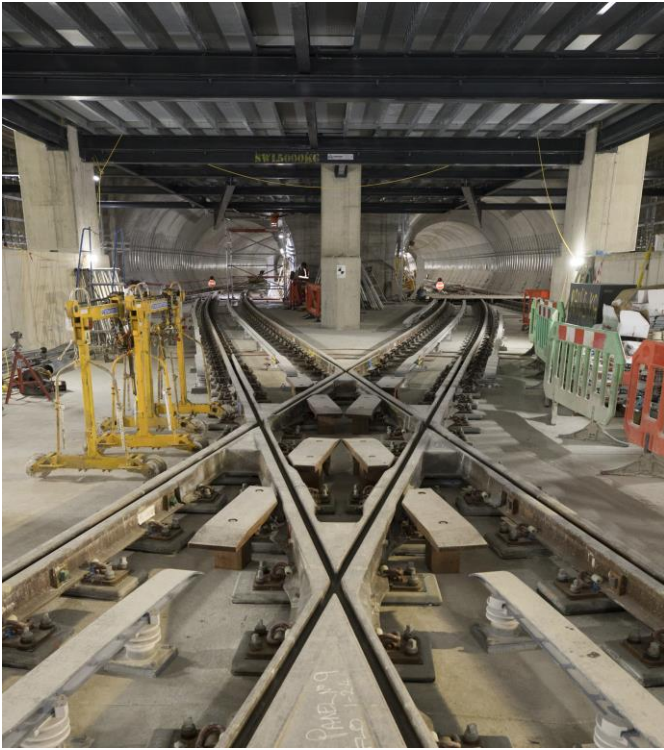


Battersea Power Station: Progress Update

May 2019 – July 2019



FERROVIAL AGROMAN
LAING O'ROURKE JV



Track and Platforms

- Mechanical and Electrical Works progressing, some key benchmarks completed
- Cross Over track practically completed.



Battersea Power Station: Progress Update

May 2019 – July 2019



FERROVIAL AGROMAN
LAING O'ROURKE JV



Blockwork & Screeding

- Ongoing throughout all of station



Battersea Power Station: Progress Update

May 2019 – July 2019



FERROVIAL AGROMAN
LAING O'ROURKE JV



Civils works

- Prospect Way
- Western Ramp



Battersea Power Station: Progress Update

July 2019 – Forward



FERROVIAL AGROMAN
LAING O'ROURKE JV



Externally

- Land Handover on west end
- Utility works
- Commencement of cladding externally



Battersea Power Station: Progress Update

July 2019 – Forward



FERROVIAL AGROMAN
LAING O'ROURKE JV



Internally

- Completion of blockwork, escalator & lift delivery/install
- Ongoing cladding/finishes , station system and railway systems fit out

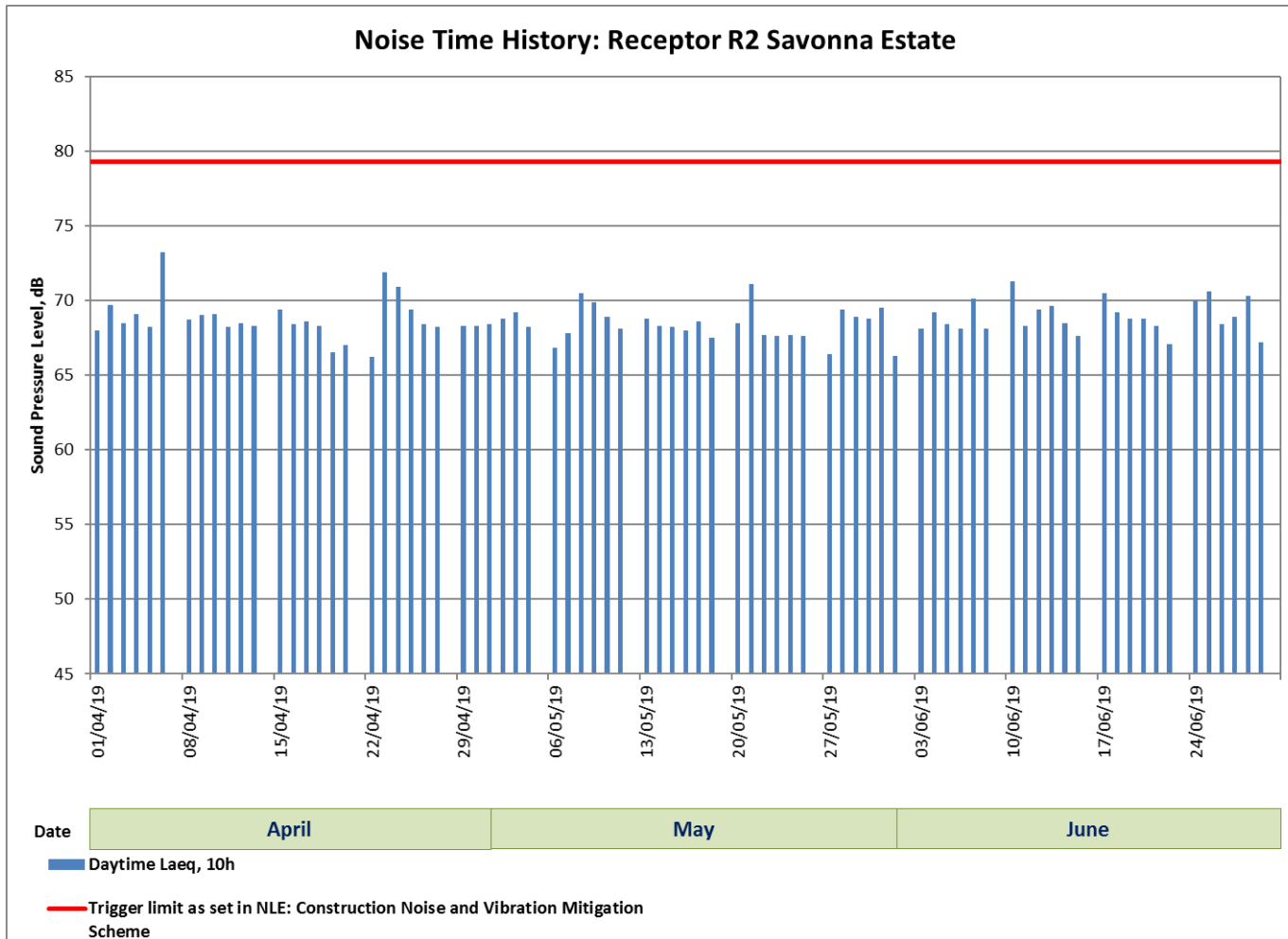


BT Monitoring

Noise monitoring



FERROVIAL AGROMAN
LAING O'ROURKE JV

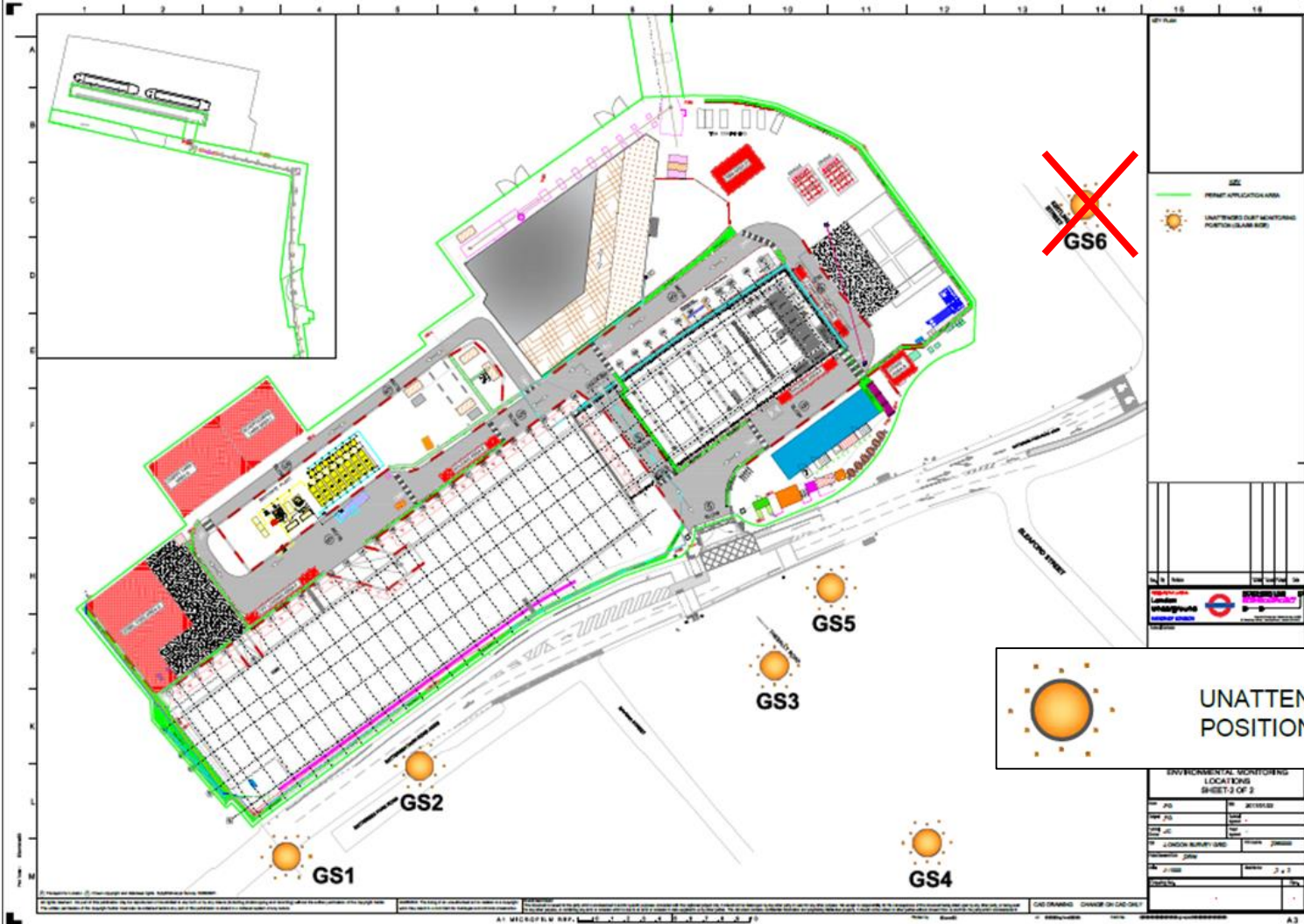


Environmental Monitoring Locations

Glass slide locations



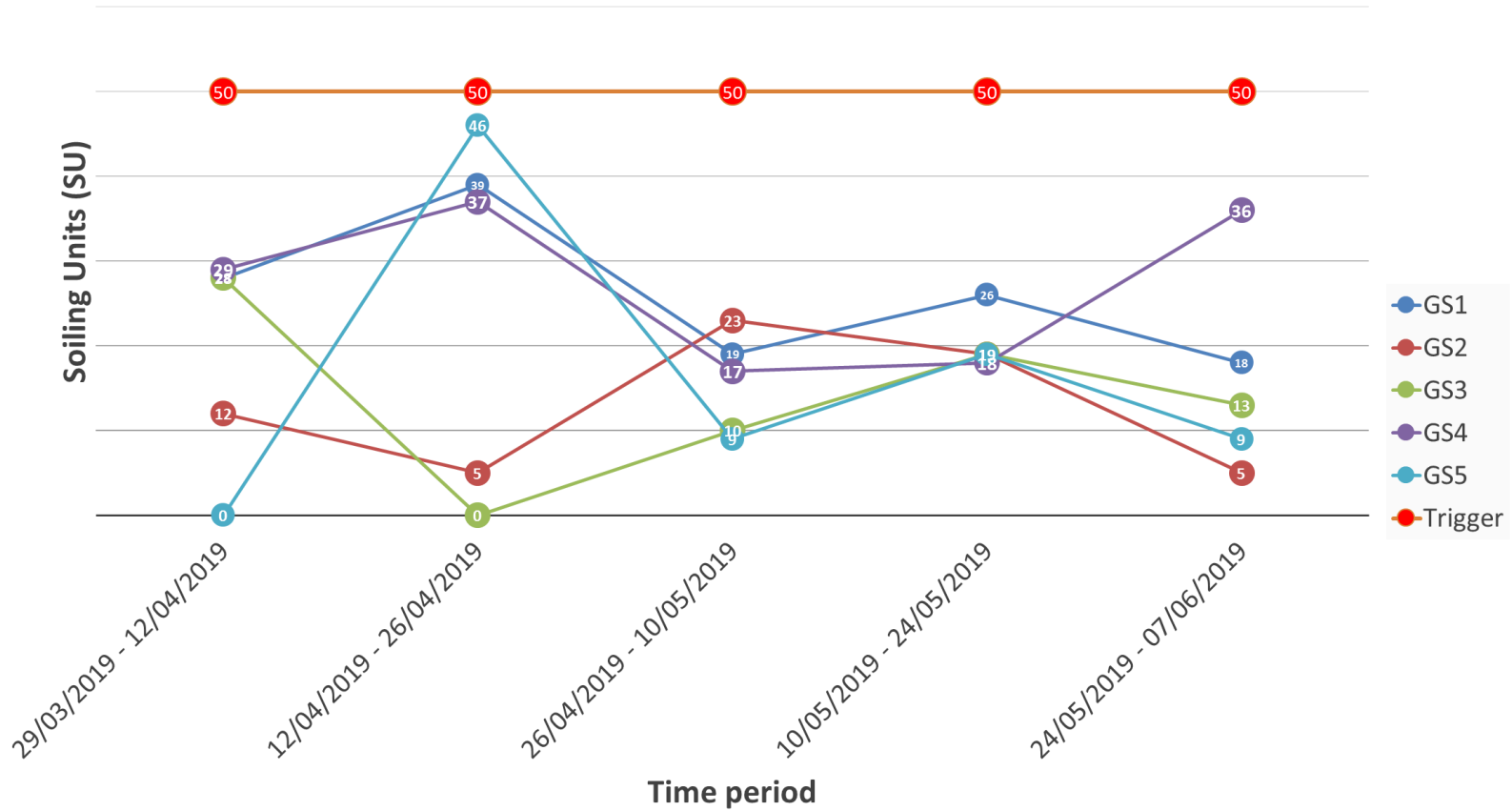
FERROVIAL AGROMAN
LAING O'ROURKE JV



BT Monitoring

Dust slides results

NLE - Battersea- Fortnightly Passive AQ monitoring



Complaints & Enquiries Summary

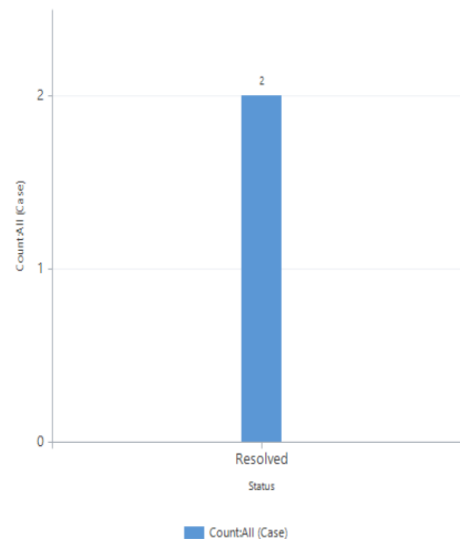


FERROVIAL AGROMAN
LAING O'ROURKE JV

Stats for Battersea between 30 April and 15 July 2019

Case Status:

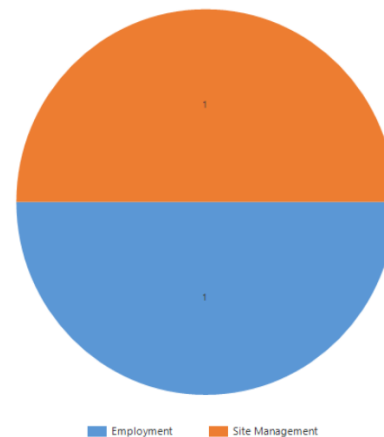
| | |
|---------------|----------------|
| Total: | 2 cases |
| Active: | 0 (0%) |
| Resolved: | 2 (100%) |



Enquiry Type: **2 enquiries**

Total:

| | |
|-----------------|---------|
| Site management | 1 (50%) |
| Employment | 1 (50%) |



Community Engagement and NLE Skills and Employment



FERROVIAL AGROMAN
LAING O'ROURKE JV



Site tours at Battersea:
60 students from St Thomas the Apostle (Southwark)
70 students from Scared Heart (Southwark)

School engagement events:

Air pollution workshop - Sacred Heart
(Southwark - pic)

Engineering talk – St George's Primary
(Wandsworth)

Women in STEM – Harris 6th form
(Westminster)

Careers networking – Graveney School
(Wandsworth)



Ways to contact us

- It is important that calls are logged through the NLE 24/7 helpdesk on 0343 222 2424 (Option 1)
- Email nle@tfl.gov.uk
- Drop In sessions
- Please visit:

<https://tfl.gov.uk/northern-line-extension>