



FERROVIAL AGROMAN  
LAING O'ROURKE JV

# Northern Line Extension

## Battersea Site

### Community Liaison Group

01.02.17

Delivering the Northern line extension with

**ferrovial**  
agroman



MAYOR OF LONDON



TRANSPORT  
FOR LONDON

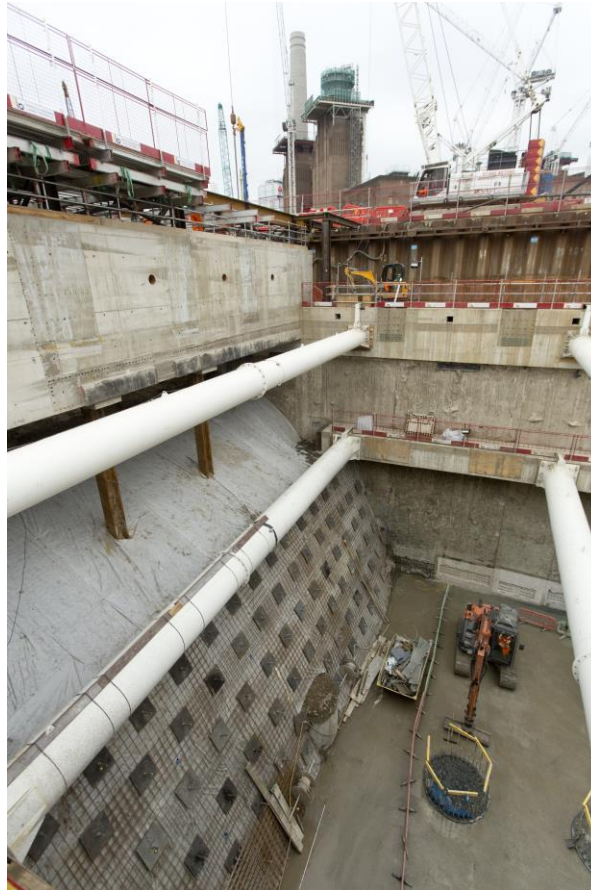
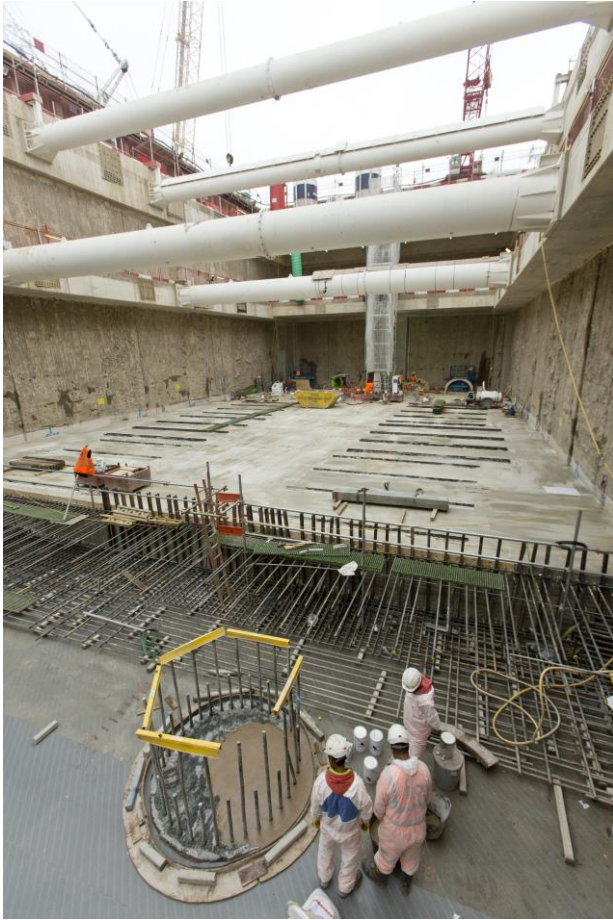


# Battersea Update Oct 16 – Jan 17



FERROVIAL AGROMAN  
LAING O'ROURKE JV

## ✓ Crossover Box



# Battersea Update Oct 16 – Jan 17

✓ SCL TBM Launch Tunnels



FERROVIAL AGROMAN  
LAING O'ROURKE JV



# Battersea Update Oct 16 – Jan 17

## ✓ Station Box



# Battersea Update Oct 16– Jan 17



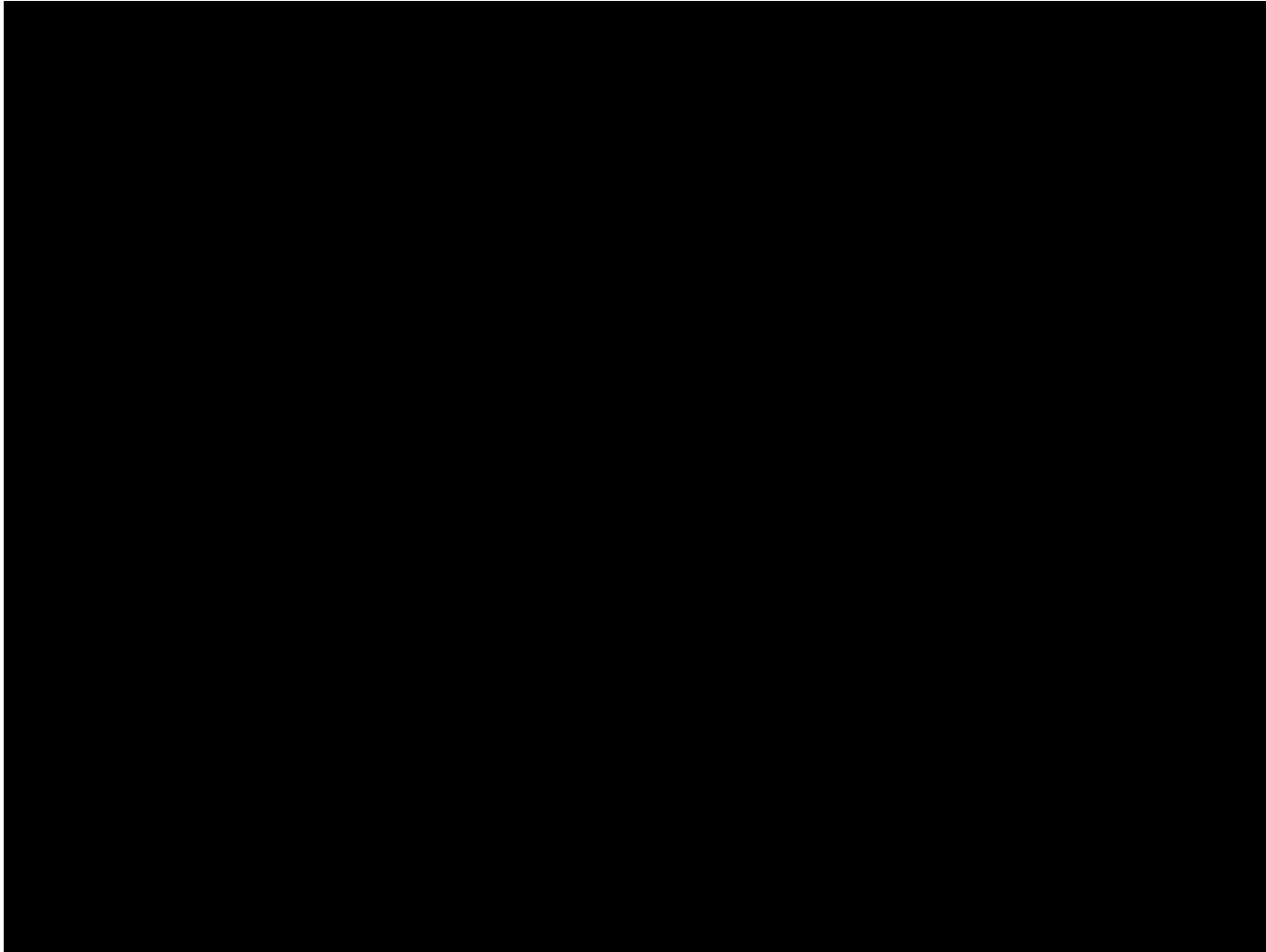
FERROVIAL AGROMAN  
LAING O'ROURKE JV

## ✓ Tunnel Boring Machines



# Battersea Update -TBM Launch

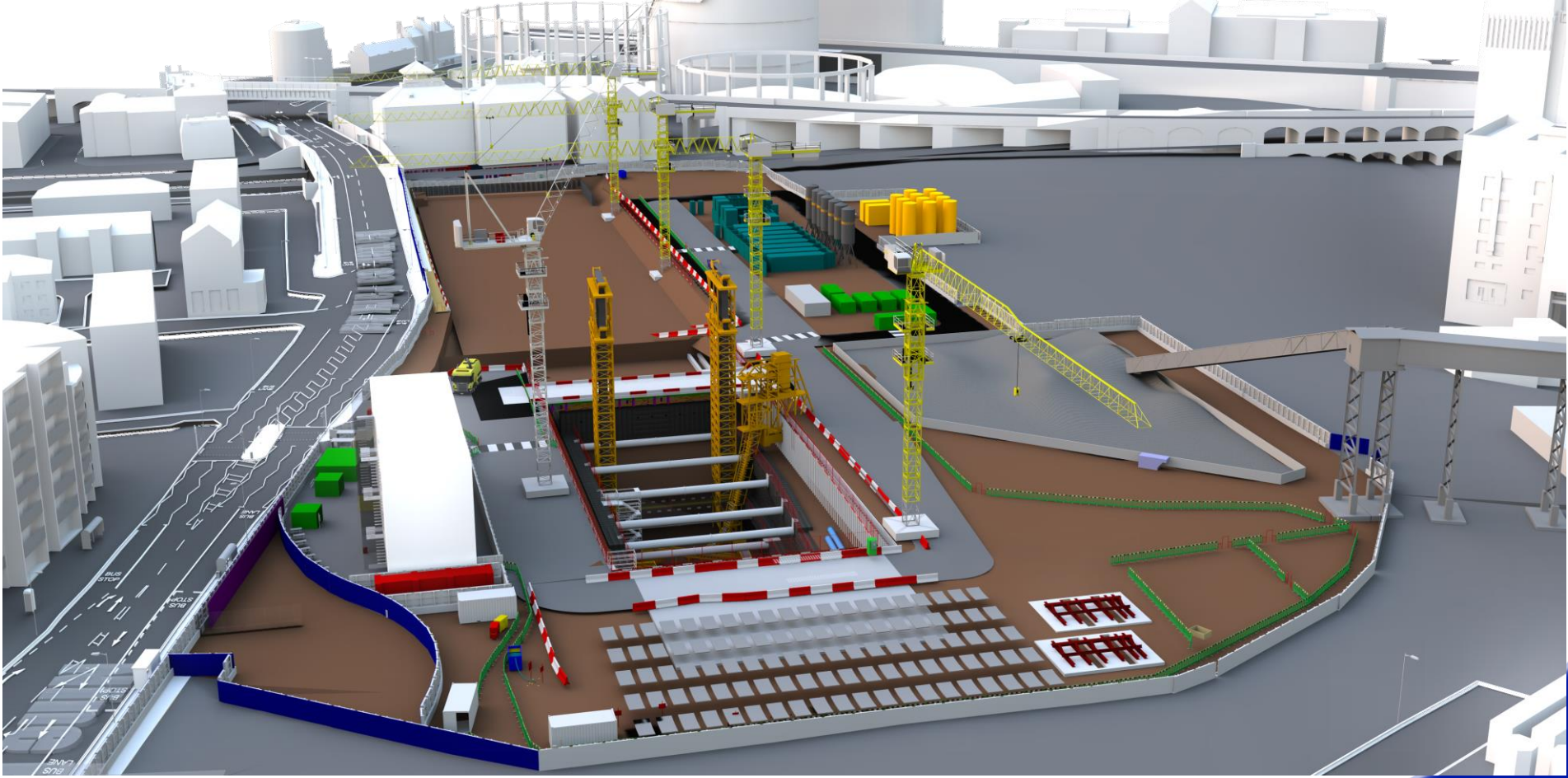
✓ Tunnel Boring Machines Oct 16- Apr 17



# Battersea Update – TBM Tunnelling



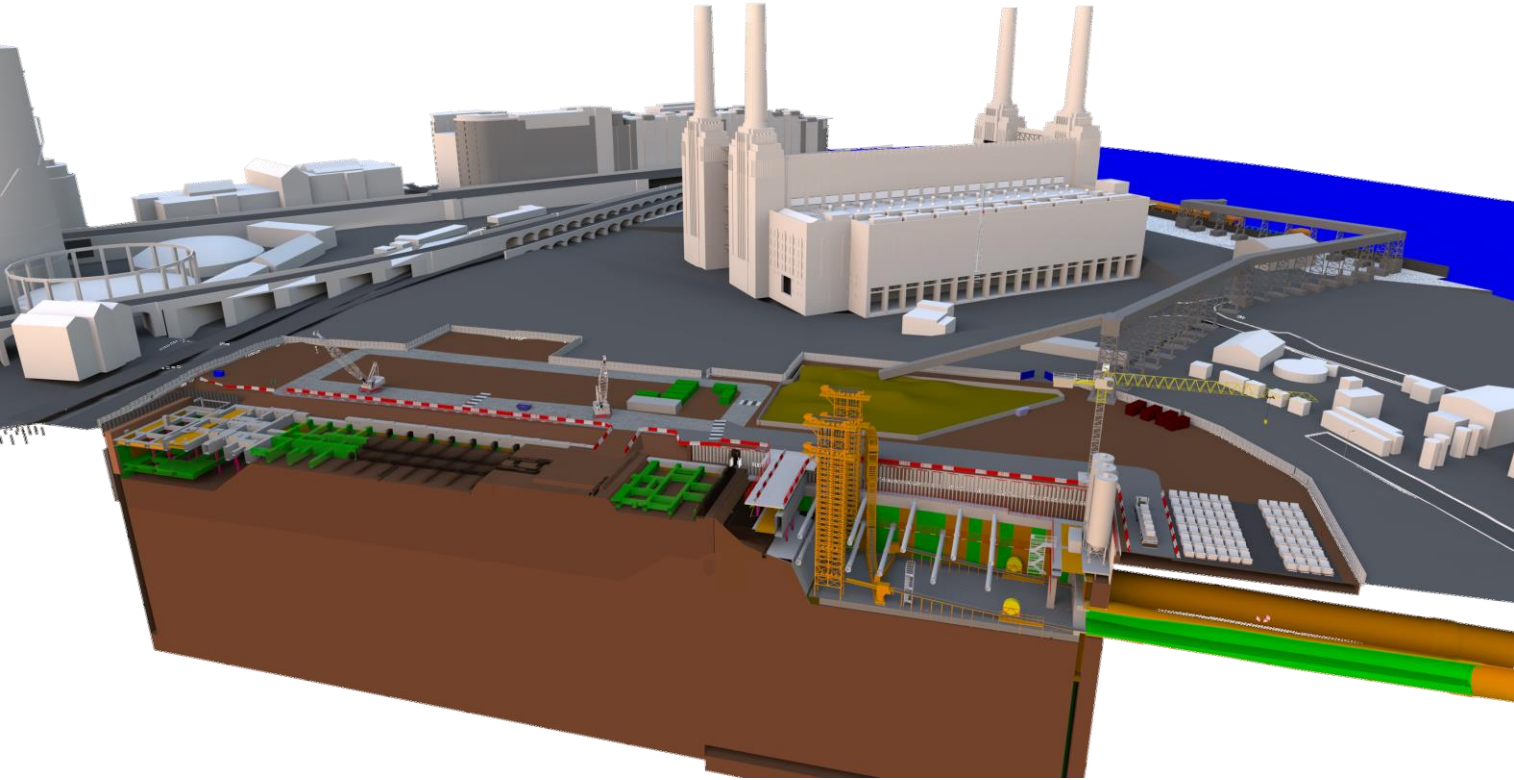
FERROVIAL AGROMAN  
LAING O'ROURKE JV



# Battersea Update Feb – Apr 17



FERROVIAL AGROMAN  
LAING O'ROURKE JV





# A 'fly-through' the station



f | Digital  
Engineering  
film

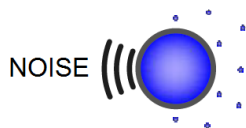
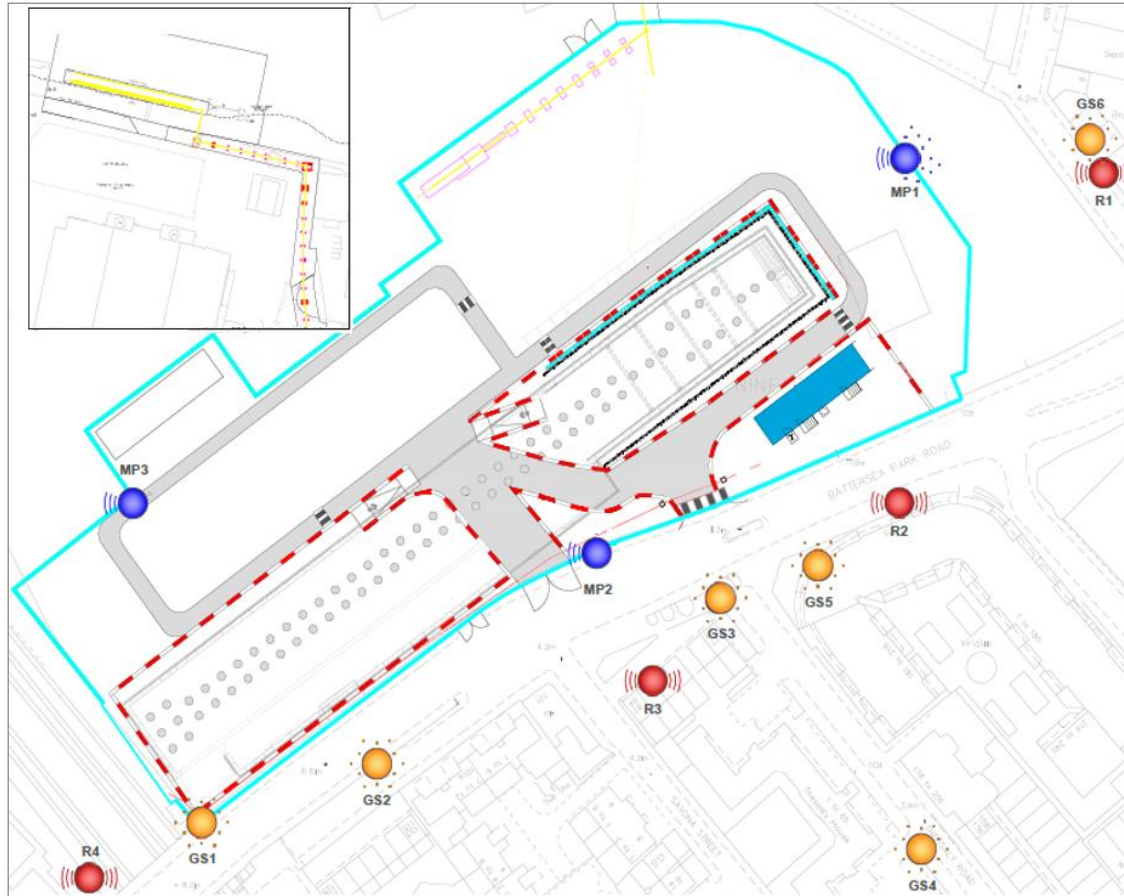


# Monitoring Locations Battersea

## Noise and Air Quality Monitoring



FERROVIAL AGROMAN  
LAING O'ROURKE JV



NOISE

AIR QUALITY MONITORING



UNATTENDED DUST MONITORING  
POSITION (GLASS SIDE)



RECEPTOR



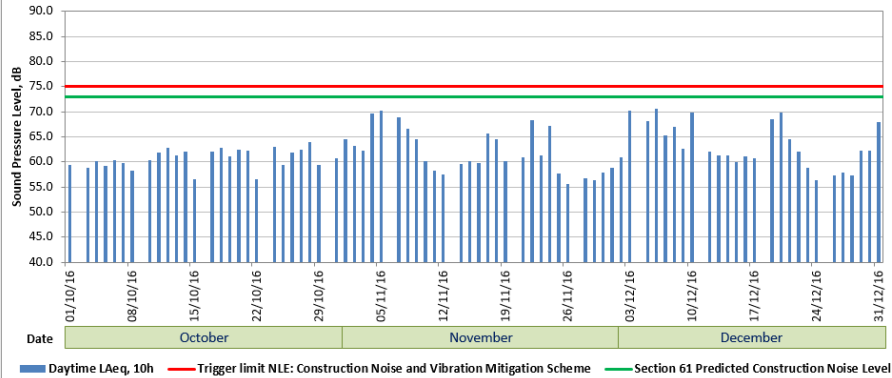
# Monitoring OCT – DEC 2016

## Environmental Monitoring

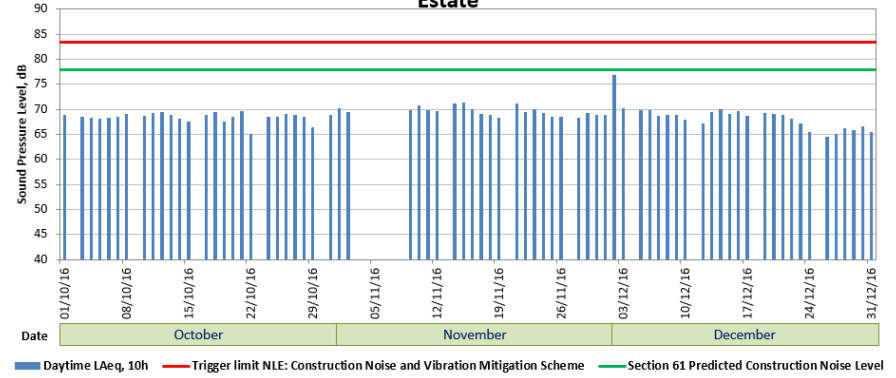


FERROVIAL AGROMAN

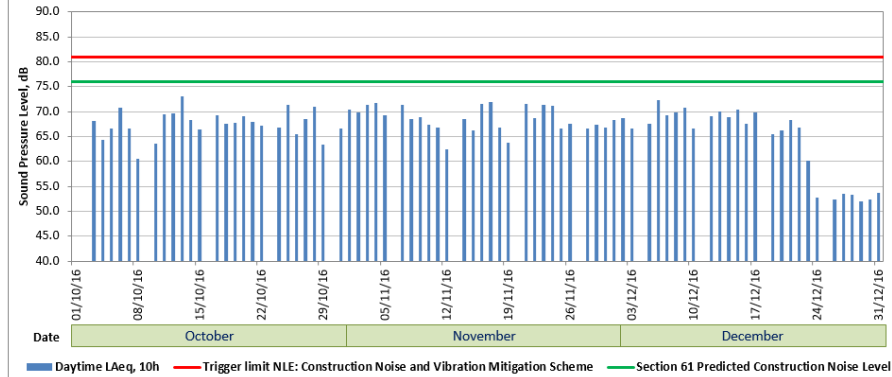
Noise Time History: Receptor R1 - Kirtling Street



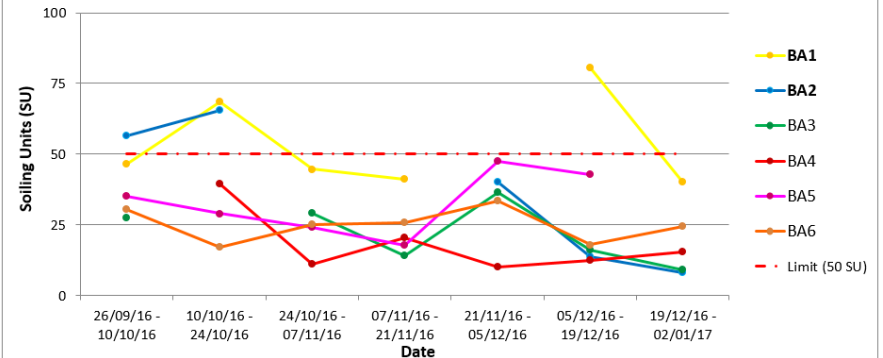
Noise Time History: Receptor R2 - Viridian Apartments & R3 - Savona Estate



Noise Time History: Receptor R4 - Cats and Dogs Home



Battersea Site - Dust deposition rates (Glass Slides)



No noise triggers recorded from October to December 2016

Full Reports are available on the NLE website.

BA1 and BA2 recorded levels of dust in excess of the levels which are considered a nuisance however these locations are likely to be impacted by traffic on Battersea Park Road.



# Environment OCT – DEC 2016

Environmental & Sustainability: Direct Benefits



FERROVIAL AGROMAN  
LAING O'ROURKE JV

**1 BARGE = 50 WAGONS**



Excavated material is being sent to Goshems Farm by barge to restore this formal landfill site to high grade arable farm land. NLE have taken wagons off the streets of London, reducing local contaminants in the air.

**TOTAL BARGES 269 BARGES**

**WAGON JOURNEYS AVOIDED 29,982 WAGONS OFF THE STREETS**

**TOTAL MUCK AWAY 269,836 TONNES OF SPOIL**

**EMISSIONS SAVINGS 467 Tonnes of CO2**



# Environment OCT – DEC 2016

Environmental & Sustainability: Indirect Benefits



FERROVIAL AGROMAN  
LAING O'ROURKE JV



## Safer Roads in London

**A SINGLE JOURNEY to a disposal site has 34 left turns.**

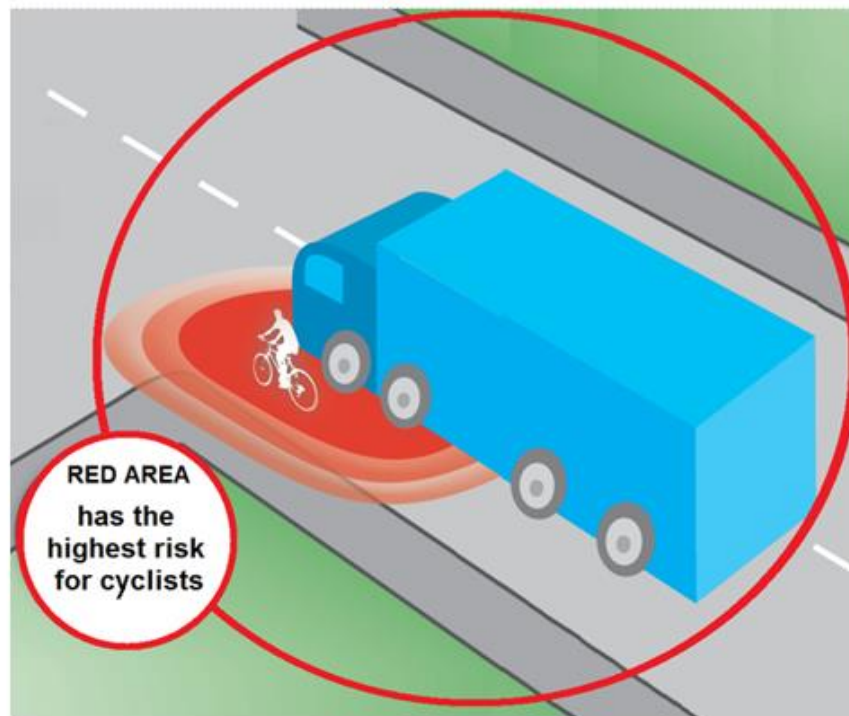
The Northern Line

Extension has  
avoided more

than



**509,690**  
left turns



# Traffic Management / Logistics

- TBM continuing Abnormal loads, after 20.00hrs / but mostly before 0700 particularly next 2/3 weeks associated with TBM Lifts
- Tunnel Segments for TBM will start to arrive in March
- Cementation Skanska undertake Concrete Pours up to approx 2200 2/3 days week
- Around Easter the Bentonite Silo's will start to be removed
- Road sweeper to clean main road at least once a day, from Duchess Bridge to Kirtling St traffic lights.
- Flo has Road Sweeper full time at Battersea
- Reduce and limit any muck falling from vehicles leaving site. This will also enable us to clean Battersea Park Rd more often as a good will gesture.



# Battersea Working Hours

- Core hours are 08:00 to 18:00 Monday to Friday and Saturday 08:00 to 13:00 for surface works.
- Extended hours for Diaphragm Wall in the Station Box.
- NLE have applied to Wandsworth for the TBM works to be 24/7.
- NLE always look to apply 'Best Practicable Means'
- Live monitoring system installed on site.



# Your Feedback



FERROVIAL AGROMAN  
LANC O'BURKE JV

You Suggested	We Did
Request to attend the Savona Residents Association meeting	We attended this meeting on 29 <sup>th</sup> November as requested by the chairman Harry to update the residents and answer any queries / questions
Light Pollution	NLE redirected the lights around the crossover box and overall site lighting is under review
Keep Roads Clean	Road sweepers are working permanently Battersea Park Road Wheel washer is operational
Engagement with Local Schools	We continue to get work experience students from the three Boroughs and we have completed 266 days of summer placements
Engagement with Local MPs and members of GLA	We hosted a visit for GLA members on Oct 27
More engagement with schools and youth	Griffin Primary School/ Kennington Park Academy/ Henry Fawcett – session with the TBM naming





# Complaints Summary



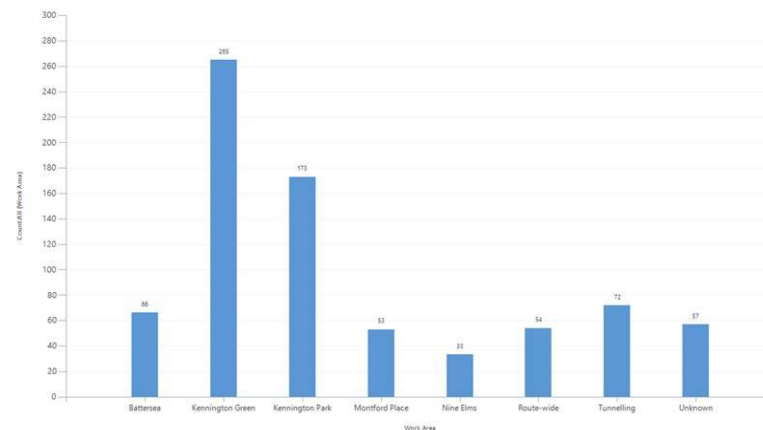
FERROVIAL AGROMAN  
LAING O'ROURKE JV

Since Sep 16...

- 332 contact cases
- 39 of these cases for Battersea
  - 34 resolved
  - 5 are active

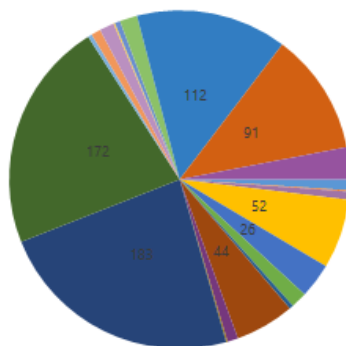
Cases by Work Area

Cases by Work Area



Cases by Category

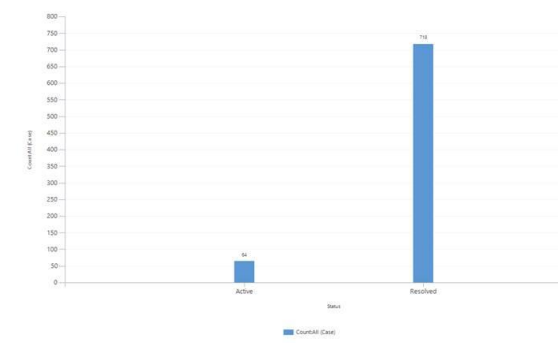
All Cases



- (blank)
- Archaeology and...
- Behaviour
- Construction Str...
- Defect Survey
- Dust
- Employment
- General Vesting
- Declaration...
- Legal
- Local Authority I...
- Miscellaneous
- Noise and Vibrat...

Open Cases / Closed Cases

Open Cases / Closed Cases



# NLE Skills and Employment



FERROVIAL AGROMAN  
LAING O'ROURKE JV



Gabriel Jetawo's (pictured above) and Brian Linden, founder of Second Chance.



NINE ELMS CONSTRUCTION RECRUITMENT EVENT • JOBS AND TRAINING • FREE ENTRY

## CONSTRUCT NINE ELMS 2017

Friday 27 January  
10am - 3pm

Meet developers and contractors from across the Nine Elms Regeneration area, offering a wide range of construction jobs throughout 2017 and beyond



Construction Youth Trust pilot-scheme, Foundations for the Future. 5 workshops in 1 year. Sacred Heart School in Kennington

- 27 Positions advertised through local brokerages – 8 completed.
- Work experience – ongoing with local schools across Southwark, Lambeth & Wandsworth
- BEST (Business Education Succeeding together)
- Working with TfL on their pre-employment pilot scheme aimed to get young people from the local area upskilled and into apprenticeships



# Engagement Opportunities

- CLG meetings
- One to one meetings
- Drop in sessions
- School and Youth



## Engagement

- Stakeholder Activities
- Cycling safety Events



# Ways to contact us

- It is important that calls are logged through the NLE 24/7 helpdesk on 0343 222 2424 Option 1
- Email [nle@tfl.gov.uk](mailto:nle@tfl.gov.uk)
- Regular Drop In sessions
- Please visit:

<https://tfl.gov.uk/northern-line-extension>