

Transport for London

2017/2018 Crime statistics bulletin

Quarter 2 2017/18 (1 July – 30 September 2017)

# Transport for London Crime statistics bulletin

## Quarter 2 (1 July – 30 September) 2017/18

### Table of Contents

1. Introduction .....	3
1.1. Overview .....	3
2. Summary of Quarterly statistics.....	4
2.1. Quarterly crime results .....	5
3. Monthly breakdown.....	6
4. Bus-related crime levels .....	7
5. London Underground crime levels.....	10
6. Docklands Light Railway crime levels .....	11
7. London Overground crime levels .....	12
8. TfL Rail crime levels.....	13
9. London Tramlink crime levels .....	14
10. Useful links .....	15

# **I. Introduction**

## **I.1. Overview**

This quarterly bulletin brings together crime and incident statistics from the Metropolitan Police Service (MPS) and British Transport Police (BTP) for Transport for London (TfL) services during Q2 2017/18 (July–September 2017). The bulletin provides crime statistics for the London Bus network, London Underground (LU), Docklands Light Railway (DLR), London Tramlink, TfL Rail and London Overground (LO) services.

The BTP is responsible for policing the rail network in London, including TfL’s LU, DLR, London Tramlink, TfL Rail and the LO services. Crime figures for LU, DLR, London Tramlink, TfL Rail and LO have been provided by the BTP. The BTP only deals with crime relating to the rail and Tramlink networks.

The MPS is responsible for policing the rest of London’s transport network, including the bus network. The figures reported in this bulletin for the bus network are based on official MPS figures for bus-related crime unless otherwise stated. There is no distinct category of “bus crime” in the MPS crime recording system. Recorded crime data is extracted from the MPS system using a complex query that searches all MPS crime for transport venue codes and those that have the word bus, bus stop, bus station and transport related words somewhere in the electronic case file. For this reason, some crimes that did not occur on the bus network will be included in the figures. This is different from the BTP as all crimes dealt with by the BTP and included on their crime recording system relate directly to the rail network.

Recorded crime figures relate to crime recorded by the MPS and BTP in the quarterly period. The figures do not include crimes that have not been reported to the police or those that the police decide not to record. Crime figures reported in this bulletin are consistent with Home Office counting rules and are subject to revision in future updates. At the end of the financial year, crime and passenger journey figures contained in this report will be adjusted to reflect the most accurate and up to date data available. Some of the figures and percentage changes published in this report may change. The adjusted figures will be published in the annual statistical bulletin (See 2016/2017 Crime Statistics Bulletin for recent annual statistics - available here <https://tfl.gov.uk/cdn/static/cms/documents/crime-statistics-bulletin-1617.pdf>)

Definitions of crime types can be found via the useful links at the end of the report.

## 2. Summary of Quarterly statistics

Public transport in London continues to be a safe low crime environment. Currently, over ten million passengers travel on the TfL's public transport services each day with very few of them ever experiencing or witnessing crime.

Overall, the level of pan-modal transport related crime<sup>1</sup> in Q2 2017/18 is 5.2 per cent higher than Q2 2016/17 (372 more offences) and the rate of crime has increased to 7.9 crimes per million passenger journeys (from 7.5 in Q2 2016/17).

While levels of transport crime remain low, TfL and its transport policing partners remain focussed on those networks and crime types that have seen an increase.

Measures have been put in place to deal with the upward trend in violence/serious public order offences seen on some rail modes, most notably LU, DLR, LO and the Tramlink networks. The rise is largely due to an increase in low level violence, pushing and shoving, verbal disputes and threatening behaviour at busy commuter times when services are at peak capacity. Despite the upward trend in recorded incidents, overall there remain a very low number of offences. Concerted action is underway to address these offences. Some of the key measures include high visibility policing and targeted action against offenders combined with TfL's travel demand management and communications activities to encourage improved passenger behaviour, however, targeting violence/serious public order offences on transport networks remains challenging given their sporadic nature.

It should also be noted that there were some changes to the way that some offences were recorded within the Violence Against the Person (VAP) and serious public order offences throughout 2016/17; hence for the purposes of comparison with previous years, these categories should be combined for crime on rail modes. Levels of violence on the bus network are stable but it remains a priority and efforts to drive this down continue.

TfL continues to work with the BTP, City of London Police and the MPS on Project Guardian, a partnership initiative to increase the confidence in reporting sexual offences which occur on the London's public transport system, reduce the risk of becoming a victim, challenge unwelcome sexual behaviour and target offenders. In line with expectations, there has been an increase in the number of sexual offences reported to the police on the transport networks.

These low levels of crime have been driven by a range of initiatives undertaken by TfL in partnership with the police forces in London. TfL's significant investment in transport policing and commitment to improving safety and security has ensured the system remains a low crime environment.

---

<sup>1</sup> The pan-modal transport crime figure and rate is based on the aggregate crime and passenger journey figures for the bus, LU, DLR, Tramlink, LO and TfL Rail networks.

## 2.1. Quarterly crime results

Table I shows the number of recorded crimes and the rate of crime per million passenger journeys for Q2 2016/17 and Q2 2017/18<sup>2</sup>. The last column of the table shows the percentage change in the number of crimes between Q2 2016/17 and Q2 2017/18.

Table I

Network	Q2 2016/17		Q2 2017/18		% change in Crimes
	Crimes	Rate	Crimes	Rate	
Bus	4,152	7.5	4,007	7.2	-3.5%
London Underground	2,640	7.8	3,090	9.2	17.0%
Docklands Light Railway	155	5.2	162	5.4	4.5%
London Overground <sup>3</sup>	331	7.0	347	7.5	4.8%
TfL Rail	96	8.1	98	8.3	2.1%
London Tramlink	35	4.8	77	10.4	120.0%
Pan-Modal	7,409	7.5	7,781	7.9	5.2%

<sup>2</sup> Quarterly and monthly crime figures published in this bulletin are based on figures produced by the MPS and BTP at the end of each month as a snapshot of recorded crime. These figures are then aggregated to create quarterly values for this quarterly bulletin. These figures are not updated retrospectively until the end of the financial year when adjusted figures are published in the annual statistical bulletin.

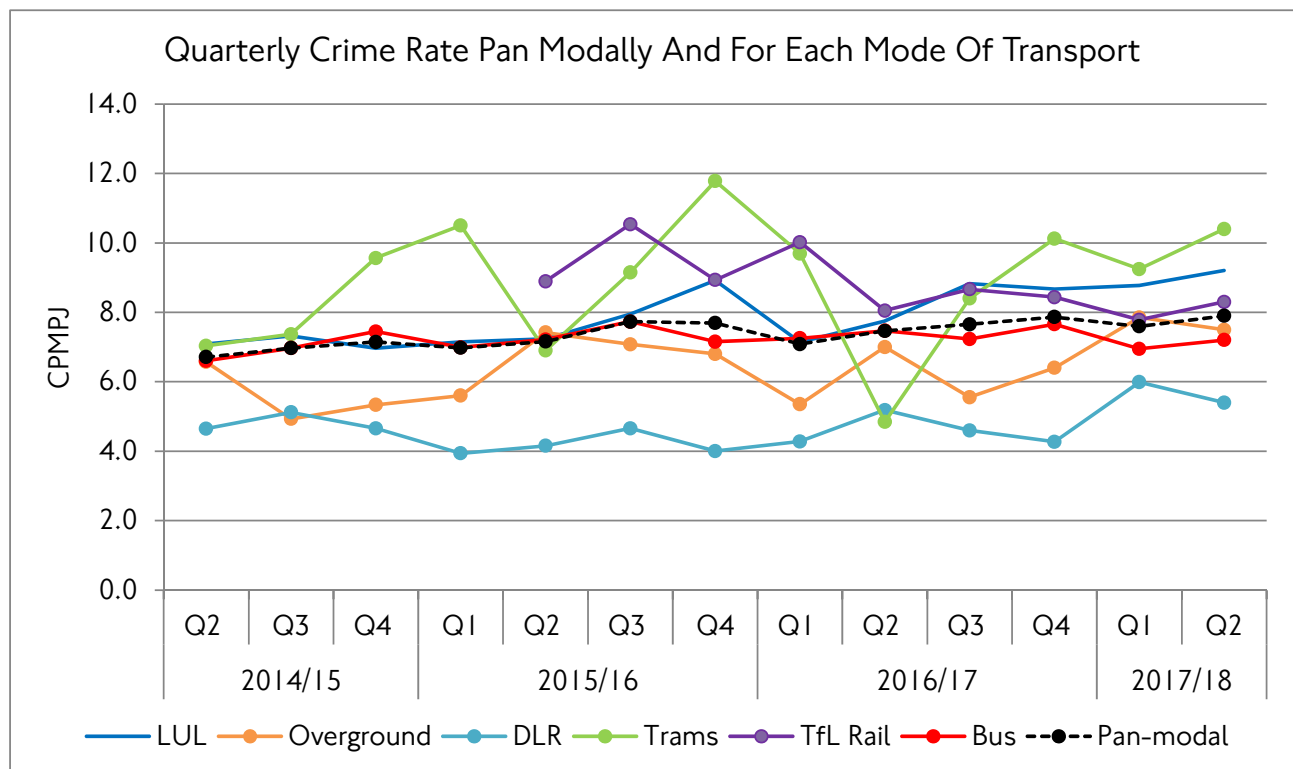
### 3. Monthly breakdown

Table 2 shows the total number of crimes for each month in Q2 2017/18. Chart 1 shows the crime rate on each mode and pan-modally since April 2014.

Table 2

Network	July		August		September	
	Crimes	Rate	Crimes	Rate	Crimes	Rate
Bus	1,536	8.1	1,197	7.1	1,274	6.5
London Underground	1,103	9.4	992	9.1	995	9.0
Docklands Light Railway	55	5.3	62	6.3	45	4.6
London Overground	124	7.7	113	7.6	110	7.2
TfL Rail	28	6.9	29	7.7	41	10.1
Tramlink	27	10.8	26	11.5	24	9.1
Pan-Modal	2,873	8.5	2,419	7.9	2,489	7.3

Chart 1



#### 4. Bus-related crime levels

Table 3 shows the breakdown of MPS bus-related crime by the major crime categories used by the MPS for Q2 2017/18 the table includes the number of crimes, the crime rates per million passenger journeys and makes comparisons with Q2 2016/17. Table 4, overleaf, shows the same breakdown by borough.

**Table 3**

Offence	Q2 2016/17		Q2 2017/18		% change in Crimes
	Crimes	Rate	Crimes	Rate	
Criminal Damage	276	Less than 1	214	Less than 1	-22.5%
Other notifiable crime <sup>4</sup>	129	Less than 1	112	Less than 1	-13.2%
Robbery	197	Less than 1	256	Less than 1	29.9%
Sexual offences	223	Less than 1	188	Less than 1	-15.7%
Theft and Handling	1,740	3.1	1,714	3.1	-1.5%
VAP	1,587	2.9	1,523	2.7	-4.0%
<b>Total Offences</b>	<b>4,152</b>	<b>7.5</b>	<b>4,007</b>	<b>7.2</b>	<b>-3.5%</b>

<sup>4</sup> Other notifiable crime includes burglary, fraud and forgery, drugs and other serious offences.

**Table 4 - Borough breakdown of bus-related crime for Q2 2017/18 (July–September 2017)**

	Criminal Damage	Other Notifiable Offences	Robbery	Sexual Offences	Theft and Handling	Violence Against the Person	Q2 2017/18 Total	Q2 2016/17 Total	% Change
Barking & Dagenham	3	5	4	1	28	26	67	72	-6.9%
Barnet	8	4	6	7	36	50	111	135	-17.8%
Bexley	10	0	1	6	13	26	56	65	-13.8%
Brent	6	2	9	10	64	53	144	181	-20.4%
Bromley	8	2	6	7	20	42	85	79	7.6%
Camden	7	3	19	11	152	58	250	166	50.6%
Croydon	4	5	13	5	33	69	129	165	-21.8%
Ealing	11	3	4	9	50	63	140	158	-11.4%
Enfield	2	5	8	2	37	45	99	99	0.0%
Greenwich	10	1	4	7	25	66	113	114	-0.9%
Hackney	13	5	9	4	138	58	227	209	8.6%
Hammersmith & Fulham	3	4	8	2	43	38	98	105	-6.7%
Haringey	18	3	18	13	115	55	222	186	19.4%
Harrow	4	1	2	5	17	24	53	54	-1.9%
Havering	4	3	1	3	15	51	77	68	13.2%
Hillingdon	14	5	6	2	29	41	97	127	-23.6%
Hounslow	3	1	3	2	23	53	85	98	-13.3%
Islington	4	2	21	8	100	47	182	194	-6.2%



	Criminal Damage	Other Notifiable Offences	Robbery	Sexual Offences	Theft and Handling	Violence Against the Person	Q2 2017/18 Total	Q2 2016/17 Total	% Change
Kensington & Chelsea	1	2	1	1	41	32	78	81	-3.7%
Kingston upon Thames	4	1	0	9	16	20	50	50	0.0%
Lambeth	11	6	11	6	79	75	188	251	-25.1%
Lewisham	11	4	9	5	44	68	141	156	-9.6%
Merton	1	2	7	4	19	16	49	70	-30.0%
Newham	8	4	16	8	73	48	157	138	13.8%
Redbridge	2	1	11	7	57	23	101	87	16.1%
Richmond upon Thames	3	0	0	0	17	23	43	45	-4.4%
Southwark	15	7	20	7	71	86	206	223	-7.6%
Sutton	0	1	3	0	5	15	24	33	-27.3%
Tower Hamlets	3	1	5	5	56	47	117	135	-13.3%
Waltham Forest	7	15	9	8	54	41	134	129	3.9%
Wandsworth	4	2	5	5	45	52	113	114	-0.9%
Westminster	12	12	17	20	194	116	371	365	1.6%
<b>Q2 2017/18 Total</b>	<b>214</b>	<b>112</b>	<b>256</b>	<b>189</b>	<b>1,709</b>	<b>1,527</b>	<b>4,007</b>	<b>4,152</b>	<b>-3.5%</b>
<b>Q2 2016/17 Total</b>	<b>276</b>	<b>129</b>	<b>197</b>	<b>223</b>	<b>1,740</b>	<b>1,587</b>			
<b>% change</b>	<b>-22.5%</b>	<b>-13.2%</b>	<b>29.9%</b>	<b>-15.2%</b>	<b>-1.8%</b>	<b>-3.8%</b>			

Key		
Volume	Low	High
% Change	Reduction	Increase

## 5. London Underground crime levels

Table 5 shows the breakdown of crime on the LU network by the major crime categories used by the BTP for Q2 2017/18. The table includes the number of crimes and the crime rates per million passenger journeys made on the LU and makes comparisons with Q2 2016/17.

Table 5

Offence	Q2 2016/17		Q2 2017/18		% change in Crimes
	Crimes	Rate	Crimes	Rate	
Violence Against the Person and Serious Public Order	959	2.8	1,168	3.5	21.6%
Sexual Offences	243	Less than 1	279	Less than 1	14.8%
Criminal Damage	222	Less than 1	166	Less than 1	-24.8%
Line of Route	11	Less than 1	21	Less than 1	90.9%
Theft of Passenger Property	879	2.6	1,164	3.5	32.4%
Motor Vehicle/Cycle Offences	132	Less than 1	113	Less than 1	-13.6%
Robbery	19	Less than 1	35	Less than 1	84.2%
Theft of Railway Property / Burglary	35	Less than 1	52	Less than 1	48.6%
Serious Fraud	55	Less than 1	20	Less than 1	-63.6%
Drugs	68	Less than 1	40	Less than 1	-41.2%
Other Notifiable Offences	17	Less than 1	32	Less than 1	88.2%
<b>Total Notifiable Offences</b>	<b>2,640</b>	<b>7.8</b>	<b>3,090</b>	<b>9.2</b>	<b>17.0%</b>

**Note:** There were some changes to the way that some offences were recorded within the VAP and serious public order offences throughout 2016/17. For the purposes of comparison with 2016/17, these categories have been combined in the above table. The combined level of VAP/serious public order offences increased by 21.6 per cent (207 additional offences) compared with the previous year.

## Docklands Light Railway crime levels

Table 6 shows the breakdown of crime on the DLR network by the major crime categories used by the BTP for Q2 2017/18. The table includes the number of crimes and the crime rates per million passenger journeys made on the DLR and makes comparisons with Q2 2016/17.

Table 6

Offence	Q2 2016/17		Q2 2017/18		% change in Crimes
	Crimes	Rate	Crimes	Rate	
Violence Against the Person and Serious Public Order	60	2.0	78	2.6	30.0%
Sexual Offences	8	Less than 1	4	Less than 1	-50.0%
Criminal Damage	15	Less than 1	9	Less than 1	-40.0%
Line of Route	4	Less than 1	4	Less than 1	0.0%
Theft of Passenger Property	45	1.5	35	1.2	-22.2%
Motor Vehicle/Cycle Offences	8	Less than 1	10	Less than 1	25.0%
Robbery	3	Less than 1	3	Less than 1	0.0%
Theft of Railway Property / Burglary	10	Less than 1	4	Less than 1	-60.0%
Serious Fraud	0	N/A	12	Less than 1	1200.0%
Drugs	2	Less than 1	1	N/A	-50.0%
Other Notifiable Offences	0	N/A	2	Less than 1	200.0%
<b>Total Notifiable Offences</b>	<b>155</b>	<b>5.2</b>	<b>162</b>	<b>5.4</b>	<b>4.5%</b>

**Note:** There were some changes to the way that some offences were recorded within the VAP and serious public order offences throughout 2016/17. For the purposes of comparison with 2016/17, these categories have been combined in the above table. The combined level of VAP/serious public order offences increased by 30.0% (18 additional offences) compared with the previous year.

## 6. London Overground crime levels

Table 7 shows the breakdown of crime on the LO network by the major crime categories used by the BTP for Q2 2017/18. The table includes the number of crimes and the crime rates per million passenger journeys made on the London Overground and makes comparisons with Q2 2016/17.

Table 7

Offence	Q2 2016/17		Q2 2017/18		% change in Crimes
	Crimes	Rate	Crimes	Rate	
Violence Against the Person and Serious Public Order	176	3.7	167	3.6	-5.1%
Sexual Offences	18	Less than 1	14	Less than 1	-22.2%
Criminal Damage	21	Less than 1	35	Less than 1	66.7%
Line of Route	6	Less than 1	1	Less than 1	-83.3%
Theft of Passenger Property	69	1.5	54	1.2	-21.7%
Motor Vehicle/Cycle Offences	20	Less than 1	51	Less than 1	155.0%
Robbery	3	Less than 1	7	Less than 1	133.3%
Theft of Railway Property / Burglary	3	Less than 1	9	Less than 1	200.0%
Serious Fraud	0	N/A	3	N/A	300.0%
Drugs	10	Less than 1	3	Less than 1	-70.0%
Other Notifiable Offences	5	Less than 1	3	Less than 1	-40.0%
<b>Total Notifiable Offences</b>	<b>331</b>	<b>7.0</b>	<b>347</b>	<b>7.5</b>	<b>4.8%</b>

**Note:** There were some changes to the way that some offences were recorded within the VAP and serious public order offences throughout 2016/17. For the purposes of comparison with 2016/17, these categories have been combined in the above table. The combined level of VAP/serious public order offences decreased by 5.1% (9 fewer offences) compared with the previous year.

## 7. TfL Rail crime levels

Table 8 shows the breakdown of crime on the TfL rail network by the major crime categories used by the BTP for Q2 2017/18. The table includes the number of crimes and the crime rates per million passenger journeys made on the TfL rail and makes comparisons with Q2 2016/17.

Table 8

Offence	Q2 2016/17		Q2 2017/18		% change in Crimes
	Crimes	Rate	Crimes	Rate	
Violence Against the Person and Serious Public Order	46	3.9	39	3.3	-15.2%
Sexual Offences	6	Less than 1	2	Less than 1	-66.7%
Criminal Damage	7	Less than 1	10	Less than 1	42.9%
Line of Route	0	N/A	0	N/A	N/A
Theft of Passenger Property	7	Less than 1	17	1.4	142.9%
Motor Vehicle/Cycle Offences	20	1.7	22	1.9	10.0%
Robbery	2	Less than 1	1	Less than 1	-50.0%
Theft of Railway Property / Burglary	2	Less than 1	5	Less than 1	150.0%
Serious Fraud	5	Less than 1	0	Less than 1	-100.0%
Drugs	1	Less than 1	2	Less than 1	100.0%
Other Notifiable Offences	0	N/A	0	N/A	N/A
<b>Total Notifiable Offences</b>	<b>96</b>	<b>8.1</b>	<b>98</b>	<b>8.3</b>	<b>2.1%</b>

**Note:** There were some changes to the way that some offences were recorded within the VAP and serious public order offences throughout 2016/17. For the purposes of comparison with 2016/17, these categories have been combined in the above table. The combined level of VAP/serious public order offences decreased by 15.2% (7 fewer offences) compared with the previous year.

## 8. London Tramlink crime levels

Table 9 shows the breakdown of crime on the London Tramlink network by the major crime categories used by the BTP for Q2 2017/18. The table includes the number of crimes and makes comparisons with Q2 2016/17.

Table 9

Offence	Q2 2016/17		Q2 2017/18		% change in Crimes
	Crimes	Rate	Crimes	Rate	
Violence Against the Person and Serious Public Order	15	2.1	48	6.5	220.0%
Sexual Offences	3	Less than 1	2	Less than 1	-33.3%
Criminal Damage	9	1.2	9	1.2	0.0%
Line of Route	2	0.3	5	0.7	150.0%
Theft of Passenger Property	3	Less than 1	4	Less than 1	33.3%
Motor Vehicle/Cycle Offences	0	N/A	2	Less than 1	200.0%
Robbery	1	Less than 1	2	Less than 1	100.0%
Theft of Railway Property / Burglary	0	N/A	3	Less than 1	300.0%
Serious Fraud	0	N/A	0	N/A	0.0%
Drugs	2	Less than 1	1	Less than 1	-50.0%
Other Notifiable Offences	0	N/A	1	Less than 1	100.0%
<b>Total Notifiable Offences</b>	<b>35</b>	<b>4.8</b>	<b>77</b>	<b>10.4</b>	<b>120.0%</b>

**Note:** There were some changes to the way that some offences were recorded within the VAP and serious public order offences throughout 2016/17. For the purposes of comparison with 2016/17, these categories have been combined in the above table. The combined level of VAP/serious public order offences increased by 220.0% (33 more offences) compared with the previous year.

## 9. Useful links

Transport for London

- <http://www.tfl.gov.uk>

Metropolitan Police Service - <http://www.met.police.uk>

- Crime figures - <https://www.met.police.uk/stats-and-data/>
- Crime definition - <https://www.met.police.uk/stats-and-data/crime-type-definitions/>

British Transport Police <http://www.btp.police.uk/>

- Crime figures - [http://www.btp.police.uk/about\\_us/your\\_right\\_to\\_information/publications.aspx](http://www.btp.police.uk/about_us/your_right_to_information/publications.aspx)
- Crime definitions - [http://crimemaps.btp.police.uk/media/uploads/btp\\_detailed\\_crime\\_categories.pdf](http://crimemaps.btp.police.uk/media/uploads/btp_detailed_crime_categories.pdf)

For more information on this report please contact TfL at [EOScommunications@tfl.gov.uk](mailto:EOScommunications@tfl.gov.uk). For media enquiries please contact TfL's press office at [pressoffice@tfl.gov.uk](mailto:pressoffice@tfl.gov.uk) or +44 (0)845 604 4141. For other general TfL enquiries please telephone +44 (0)343 222 1234, text phone: +44 (0)20 7918 3015 or use the relevant contact form of TfL's website <http://www.tfl.gov.uk/contact/default.aspx>.