

Northern Line Extension

Kennington Park

Community Liaison Group

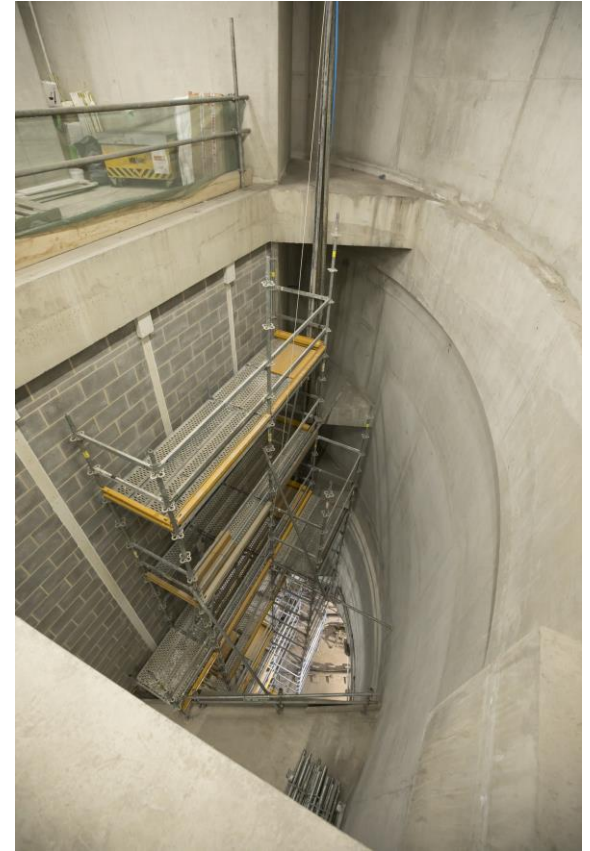
14 November 2019

#	Action	Update
1	<ul style="list-style-type: none"> Update on the programme for ground-borne noise during the commissioning phase of the project Update on Condition 19 update on on crowd monitoring at Kennington Kennington Station 	<ul style="list-style-type: none"> We will be taking base noise-level readings in Dec and repeat in summer summer 2021 when testing trains during commissioning phase. Houses Houses between Kennington station and start/end of new tunnels (in Cleaver Cleaver Sq and De Laune Street). Cond 13 states noise must not increase. increase. Base level readings will also take place on new sections of track track This will be carried out as part of our normal passenger data collection regimes (RODs and Oyster data – a base level will be established prior to NLE to NLE coming into use)
2	Amend point 4.8 in the minutes from from 25 April	Minutes now read: JB hopes Friends of Kennington Park is seen as having an an important role for the day-to-day running of Kennington Park
3	Link to the approved Kennington Park Park head house consultation report, report, which includes an image of the the design	Search "TfL Consultations Kennington Park" https://consultations.tfl.gov.uk/nle/kennington-park/user_uploads/kennington-park/user_uploads/kennington-park-consultation-report-final.pdf
4	Copy of the full detailed condition survey and images of the site prior to to NLE works taking place can be provided to MCS	There were three gates previously, two single leaf and one double to allow for allow for the mowers to gain access. Three benches were spread equidistant within the site. NB - Google Maps shows images of the park back in time
5	Kennington Park head house and park park reinstatement formal consultation consultation report	As per 3 above.
6	Details of those who have tendered for for the reinstatement of Kennington Park	This is commercially sensitive and cannot be disclosed until contracts have have been signed early 2020
7	Explanation of how monitoring will be be carried out when the NLE is operational	Monitoring will take place as per 1 above before the NLE goes into public public service. During operational service anyone can log complaints with TfL's with TfL's Customer Services team to report noise and this will be followed up followed up by the N&V team

Kennington Park Progress: July to Oct



Key electrical transformer has been installed including utility cable connected into the street



Main internal walls are now complete inside the basement

Cable trays and ducting is making good progress



Kennington Park Lookahead: November to January – key activities

At the surface level

Brickwork cladding to the headhouse will commence. This will require a scaffold to be erected around the headhouse

Waterproofing of the basement structure will be completed

Break out of acoustic shed foundation
(this needs to happen to allow us to complete the waterproofing of the basement) – works in core hours only.

Below Ground

Cable tray and ducting installation will continue

Installation of the fire fighting lift will commence

Installation of doors to rooms will continue

Kennington Station Progress: July to Oct And lookahead Nov to Jan



Progress:

Tiling for walls and floors is almost complete

Installation of new lights and CCTV cameras is ongoing

Lookahead:

Hoardings will start to be removed to allow the final tie ins and completion of the works.

Commissioning of CCTV, lights and speakers will then commence

Opening date of the new passage ways is not yet confirmed

Kennington Park – Works Timeline Lookahead

Activity	Start Date	End Date
Kennington Park Headhouse - Brickwork Facade	November 2019	March 2020
Excavation around perimeter of basement to enable waterproofing to be installed. Works have commenced	August 2019	December 2019
Utility works scheduled to take place at the on Kennington Park Place and St Agnes Place – <i>date change to align with UKPN and Thames Water works – provisional</i>	Sept 2019	October 2019
Mechanical & Electrical Installation of equipment inside the headhouse structure	February 2019	Spring 2020
Removal of concrete hardstanding from Kennington Park site	Spring 2020	Summer 2020
Tree planting	Autumn 2020	Winter 2020

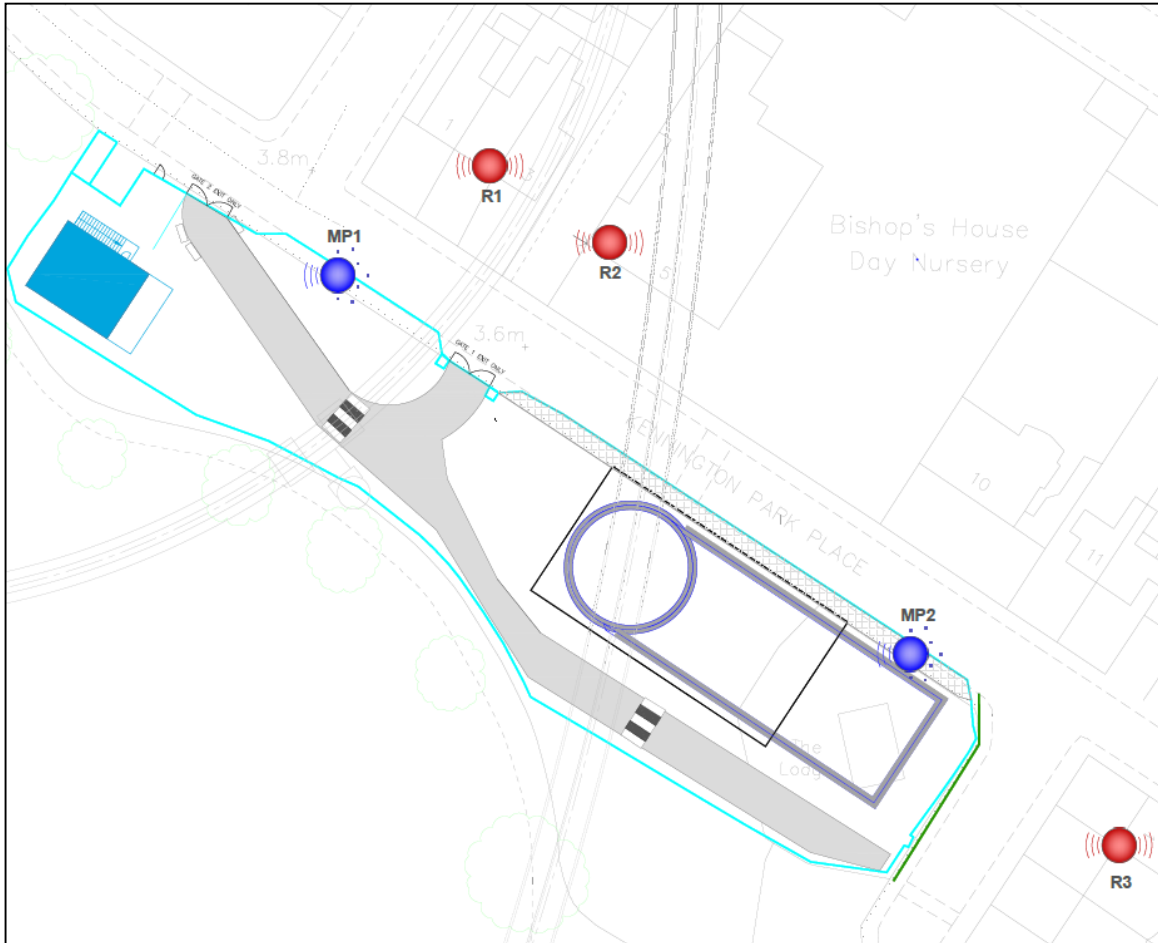
Kennington Park – Site Deliveries

- We continue to Work Related Road Risk (WRRR) driver training awareness for vulnerable road users, IE cyclists.
- 100% WRRR compliance is being maintained.
- Once abnormal deliveries have been authorised by the metropolitan police we alert the residents under section 61 explaining the reasons for either working early/late. In addition, there are no planned abnormal loads at present.
- Montford Place continues to be the holding area for deliveries for Kennington Park and Kennington Green sites
- **November to January deliveries will mainly lorries with bricks, pipework, ducting, electrical and mechanical equipment & light plant delivery lorries, visiting cranes will be required.**
- **Approx vehicle movements = 5-6 deliveries per day.**



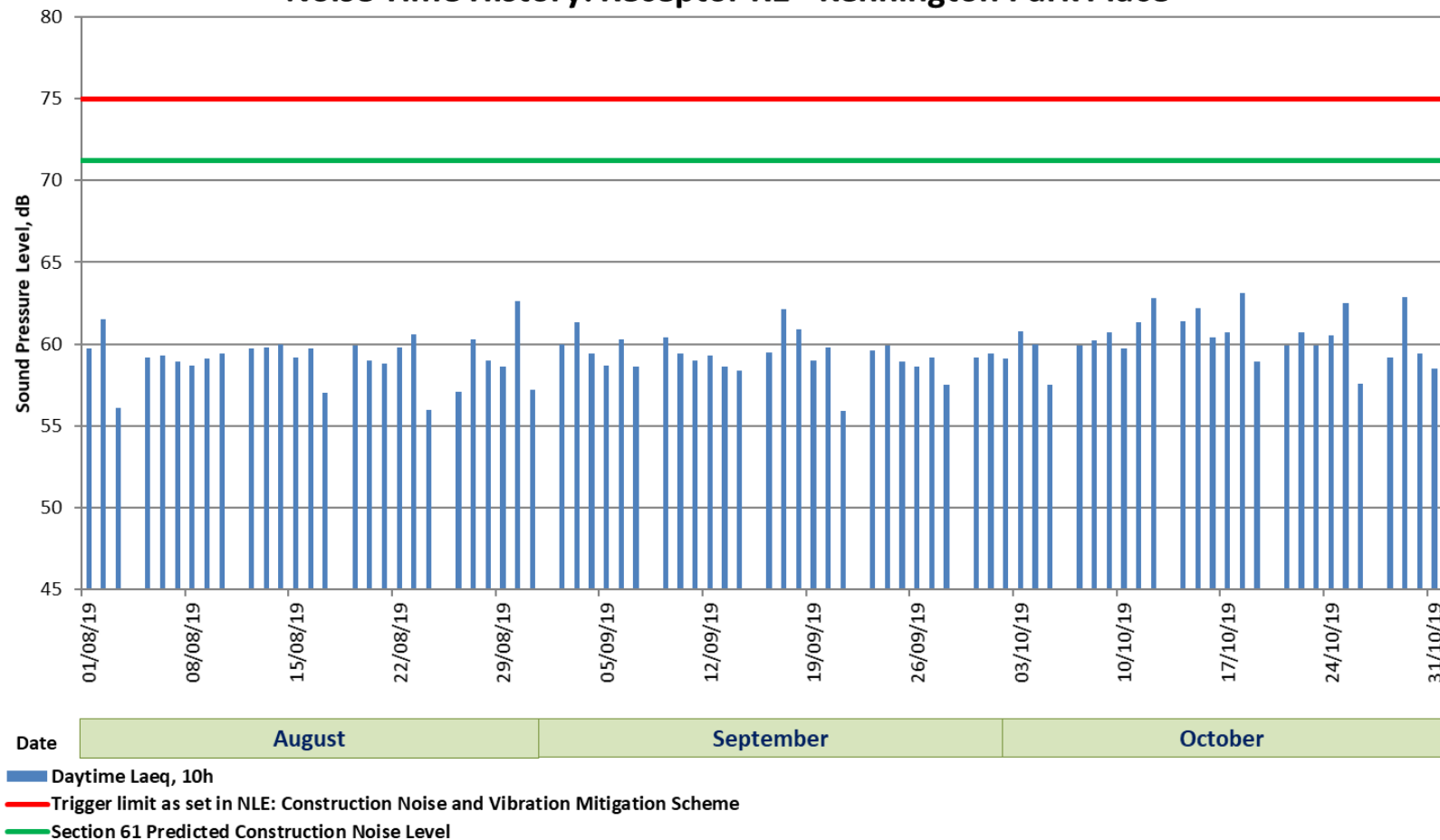
Environmental Monitoring Locations

Monitoring stations and sensitive receptors

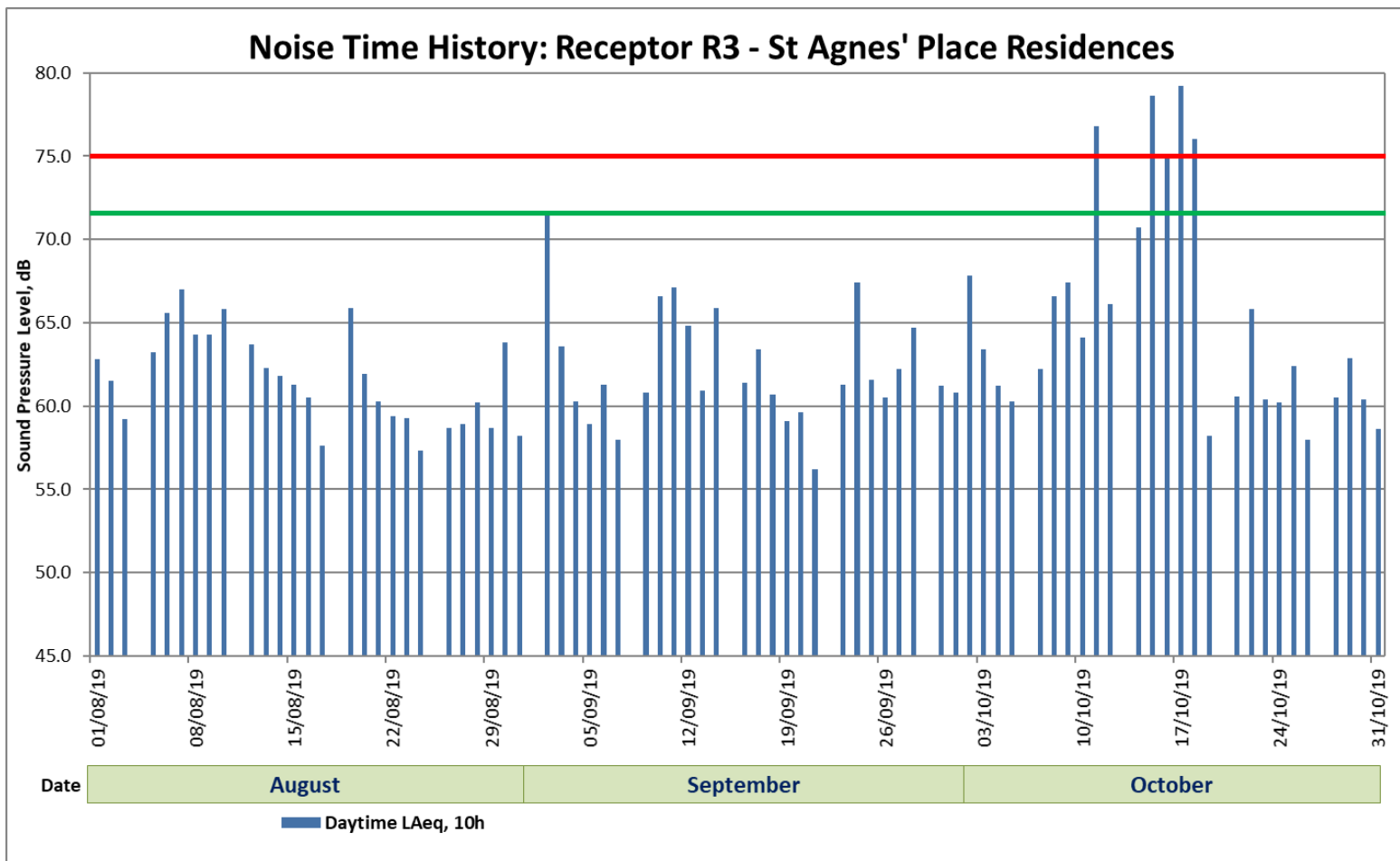


Noise Monitoring; Daytime 10Hr Avg

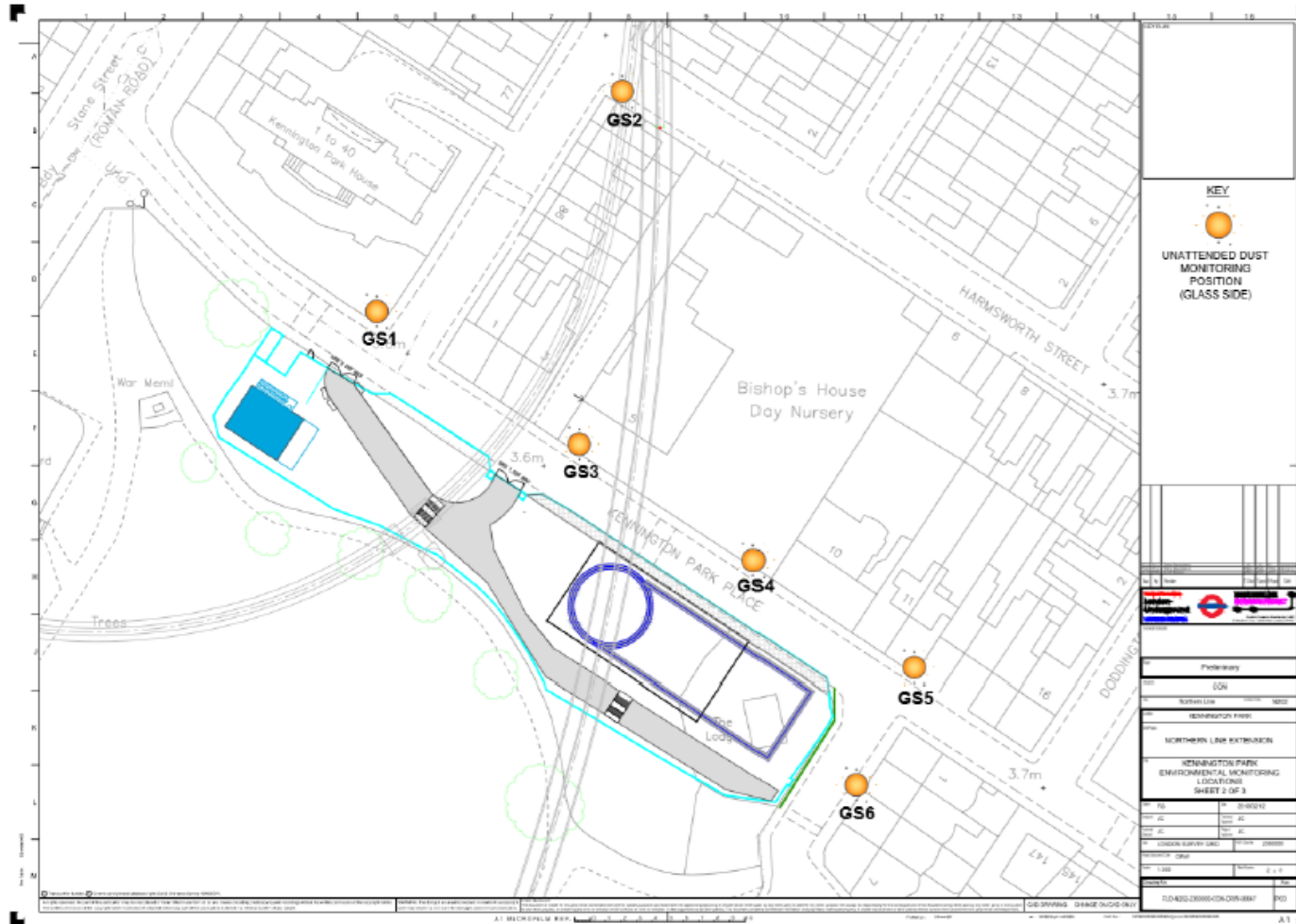
Noise Time History: Receptor R1 - Kennington Park Place



Noise Monitoring; Daytime 10Hr Avg



Dust Monitoring – Glass Slides



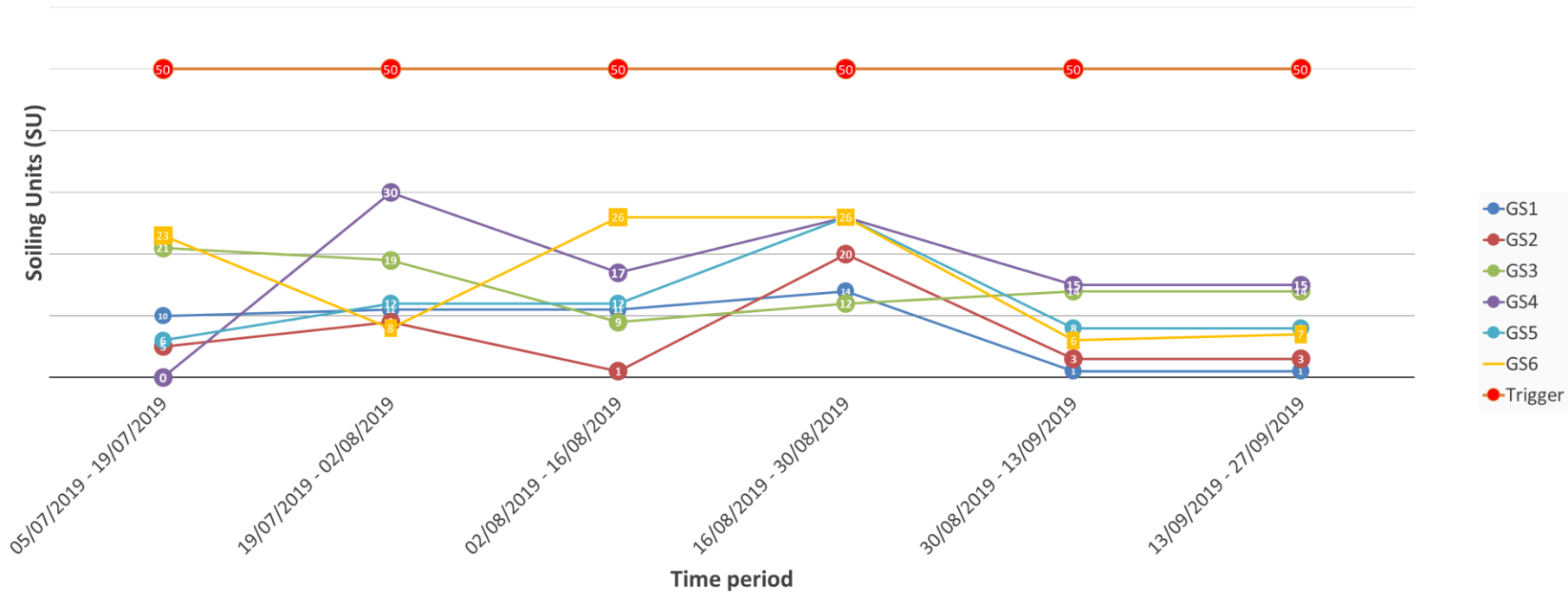
Air Quality

Dust slides results



FERROVIAL AGROMAN
LAING O'ROURKE JV

NLE - Ken Park - Fortnightly Passive AQ monitoring



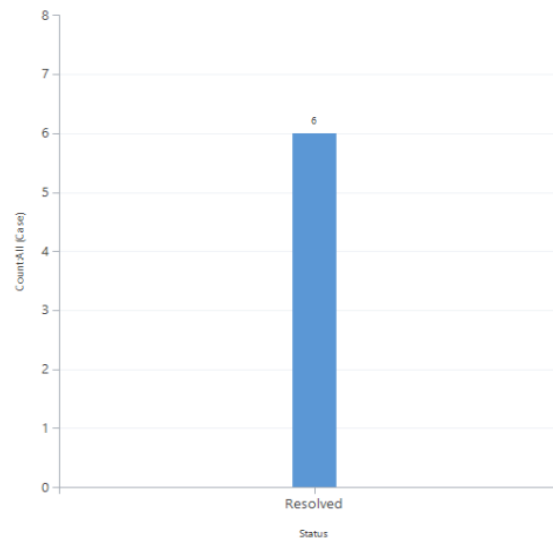
Complaints and enquiries summary



Stats for Kennington Park between 25 July and 14 November 2019

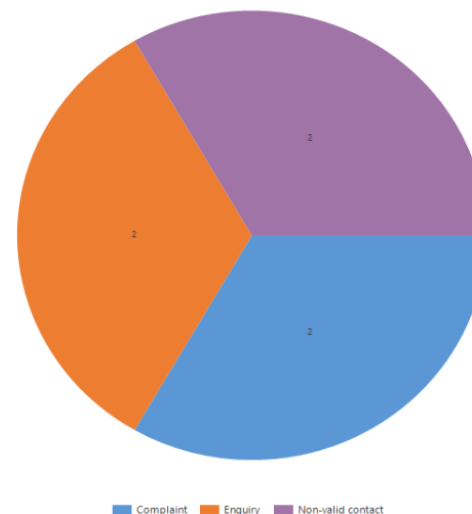
Case Status:

Total:	6 cases
Active:	0 (0%)
Resolved:	6 (100%)



Case Type:

Total:	6 cases
Enquiries:	2 (33.3%)
Complaints:	2 (33.3%)
Non-valid contact:	2 (33.3%)



Community Engagement and NLE Skills and Employment



Look ahead : we will be supporting a business breakfast event at Sacred Heart

3 students completed **work experience** on the project from Southwark- 2 from Sacred Heart 1 from St Thomas the Apostle
4 **site tours** – 2 from St Thomas 2 from Sacred Heart
1 meet the **professional event** at the Southwark Construction Centre
1 Dragons den activity – Landsdowne school (Lambeth)



Ways to contact

- It is important that calls are logged through the NLE helpdesk on 0343 222 2424 (Option 1)
- Email nle@tfl.gov.uk
- Drop In sessions
- Please visit:

<https://tfl.gov.uk/northern-line-extension>