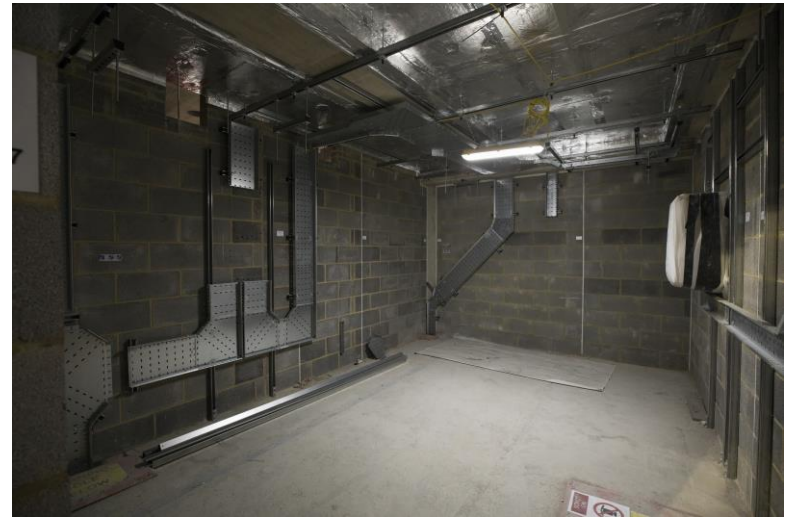
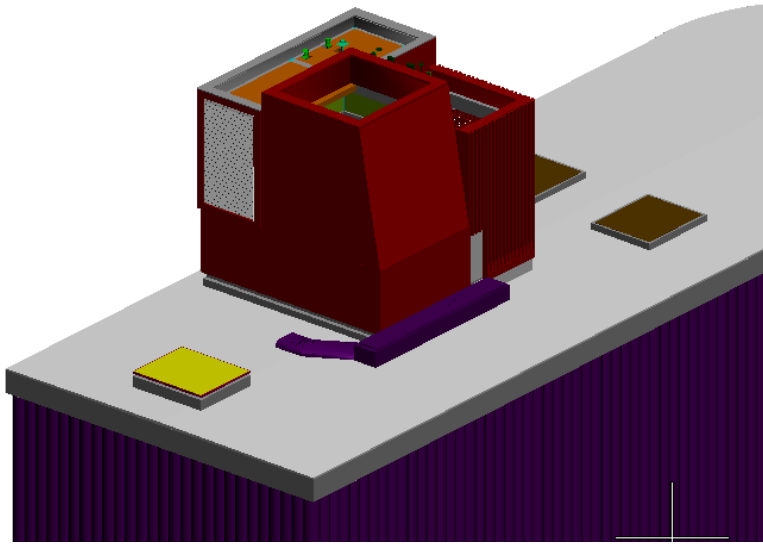


Northern Line Extension
Kennington Park
Community Liaison Group
25 July 2019

Kennington Park – May to July



Kennington Park – July to October



Kennington Park – Works Timeline

Activity	Start Date	End Date
Construction of basement – roof, walls, staircases – <i>additional time required due to sequencing of works</i>	May 2018	July 2019
Kennington Park Headhouse – Above Ground Structure <i>additional time required due to sequencing of works – does not affect overall completion</i>	January 2019	July 2019
Kennington Park Headhouse - Brickwork Facade	August 2019	November 2019
Excavation around perimeter of basement to enable waterproofing to be installed.	August 2019	Sept 2019
Utility works scheduled to take place at the on Kennington Park Place and St Agnes Place – <i>date change to align with UKPN and Thames Water works – provisional</i>	Sept 2019	October 2019
Mechanical & Electrical Installation of equipment inside the headhouse structure	February 2019	Spring 2020
Hard and Soft Landscaping Kennington Green – removal of remaining foundations and concrete surface from site, removal of hoardings etc	Commencement early Spring - Summer 2020 <i>Actual planting dates will be reviewed with our specialist suppliers</i>	

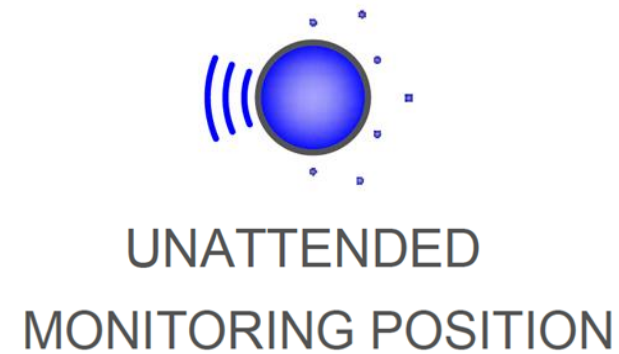
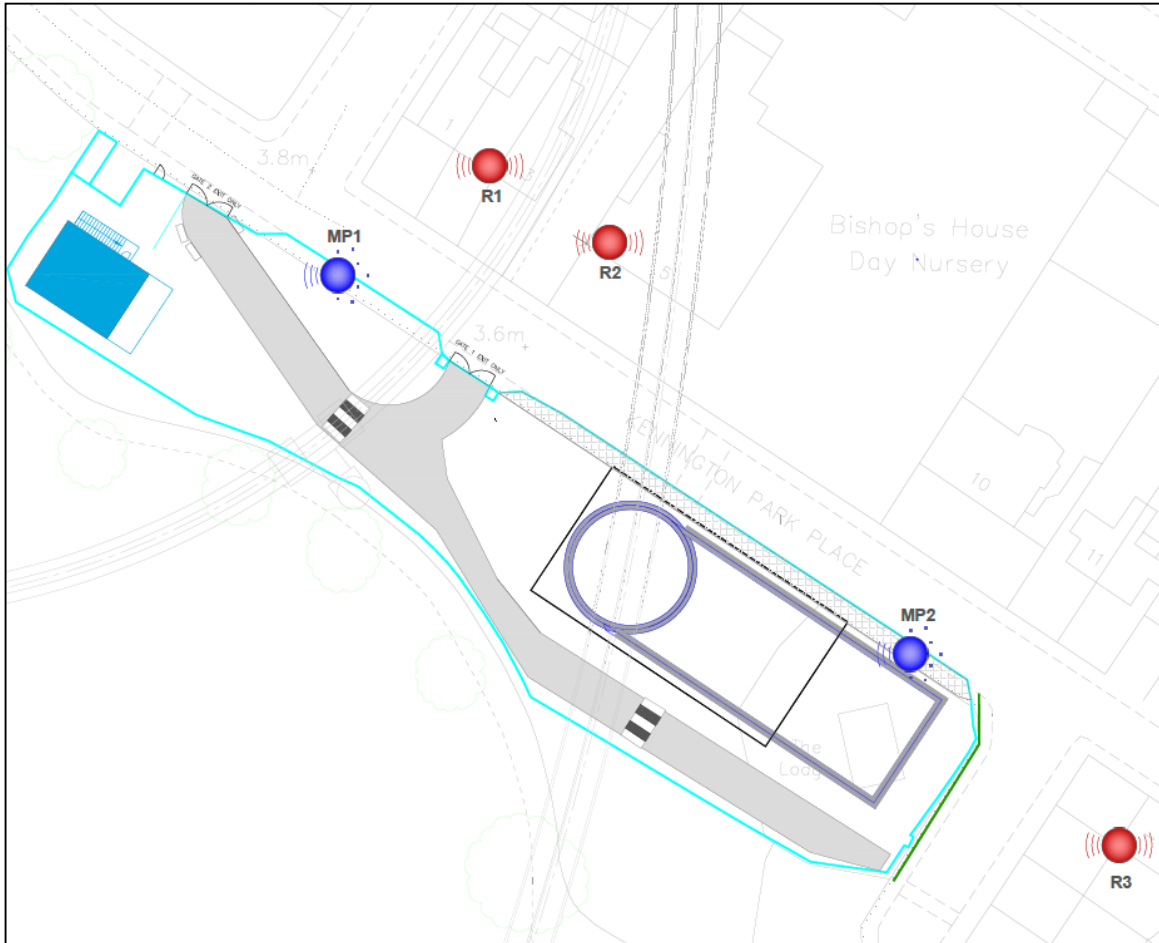
Kennington Park – Site Deliveries

- We continue to Work Related Road Risk (WRRR) driver training awareness for vulnerable road users, IE cyclists.
- 100% WRRR compliance is being maintained.
- Once abnormal deliveries have been authorised by the metropolitan police we alert the residents under section 61 explaining the reasons for either working early/late. In addition, there are no planned abnormal loads at present.
- Montford Place continues to be the holding area for deliveries for Ken Park and Ken Green sites
- July to October will be mainly lorries with pipework, ducting, electrical and mechanical equipment & light plant delivery lorries, visiting cranes will be required.
- Approx. 5-6 deliveries per day.

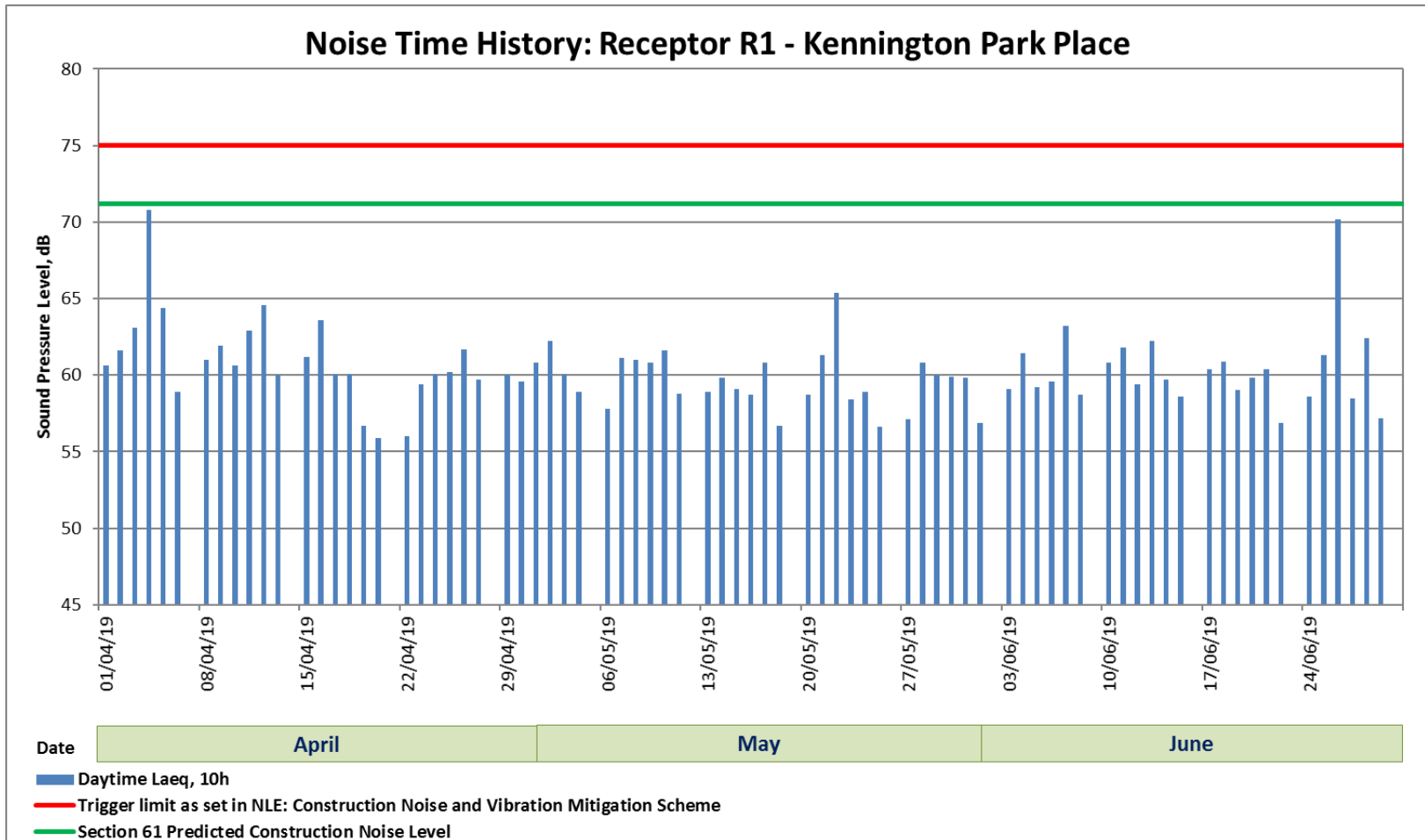


Environmental Monitoring Locations

Monitoring stations and sensitive receptors

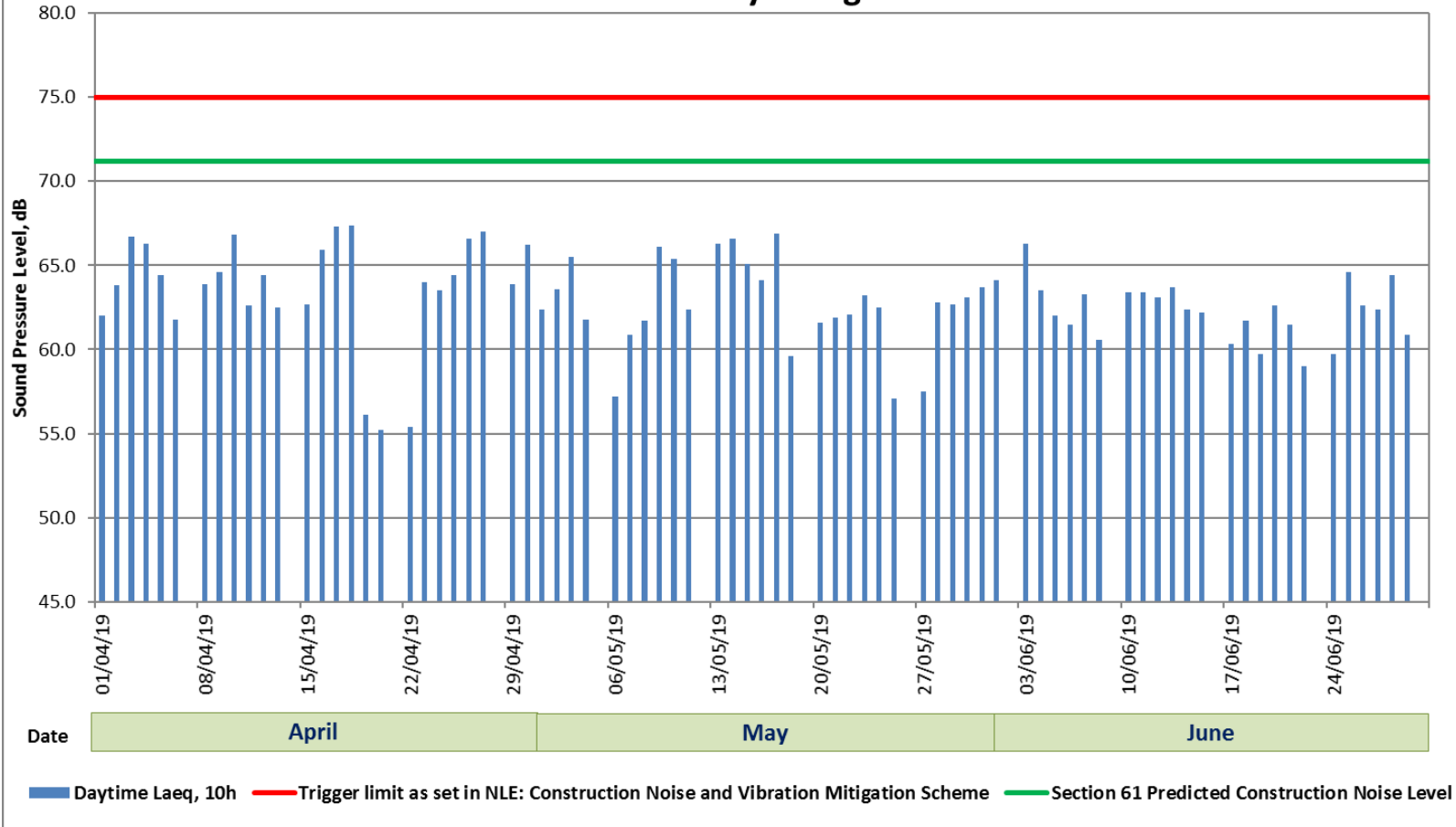


Noise Monitoring; Daytime 10Hr Avg

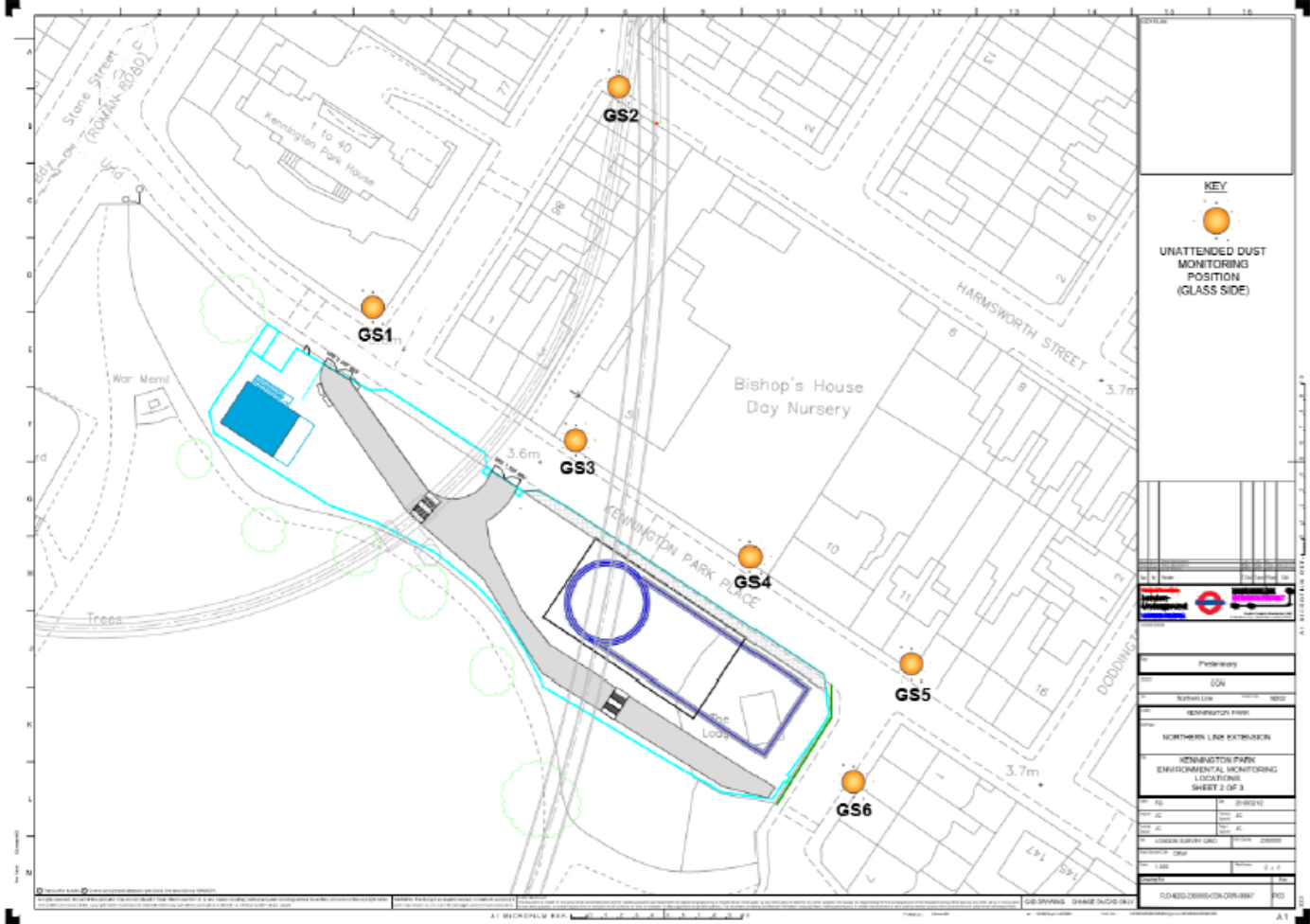


Noise Monitoring; Daytime 10Hr Avg

Noise Time History: St Agnes Place

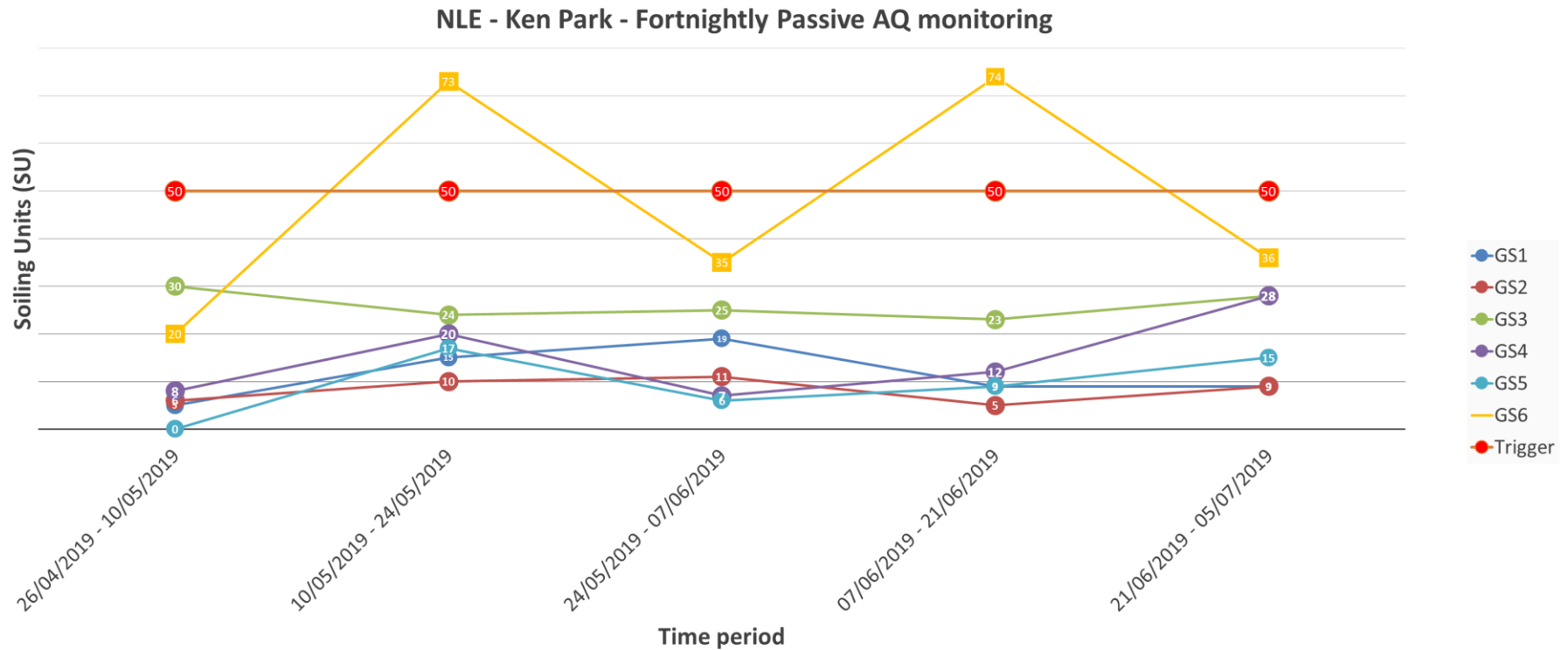


Dust Monitoring – Glass Slides



Air Quality

Dust slides results



Complaints and enquiries summary



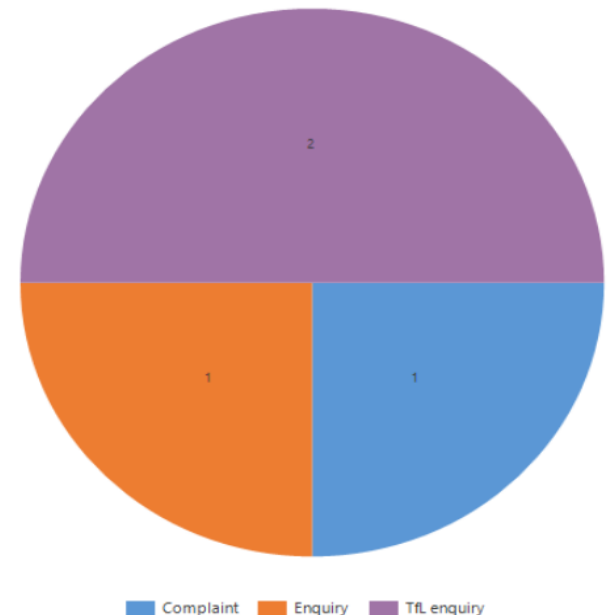
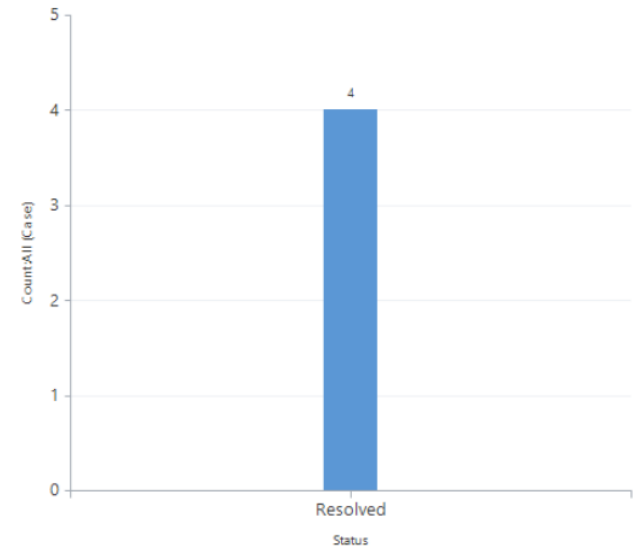
Stats for Kennington Park between 25 April and 24 July 2019

Case Status:

Total:	4 cases
Active:	0 (0%)
Resolved:	2 (100%)

Case Type:

Total:	4
cases	
TfL enquiry:	2 (50%)
Enquiry:	1 (25%)
Complaint	1 (25%)



Community Engagement and NLE Skills and Employment



Site tours at Battersea:

60 students from St Thomas the Apostle
(Southwark)

70 students from Scared Heart
(Southwark)

School engagement events:

Air pollution workshop - Sacred Heart
(Southwark - pic)

Engineering talk – St George’s Primary
(Wandsworth)

Women in STEM – Harris 6th form
(Westminster)

Careers networking – Graveney School
(Wandsworth)



Ways to contact

- It is important that calls are logged through the NLE helpdesk on 0343 222 2424 (Option 1)
- Email nle@tfl.gov.uk
- Drop In sessions
- Please visit:

<https://tfl.gov.uk/northern-line-extension>